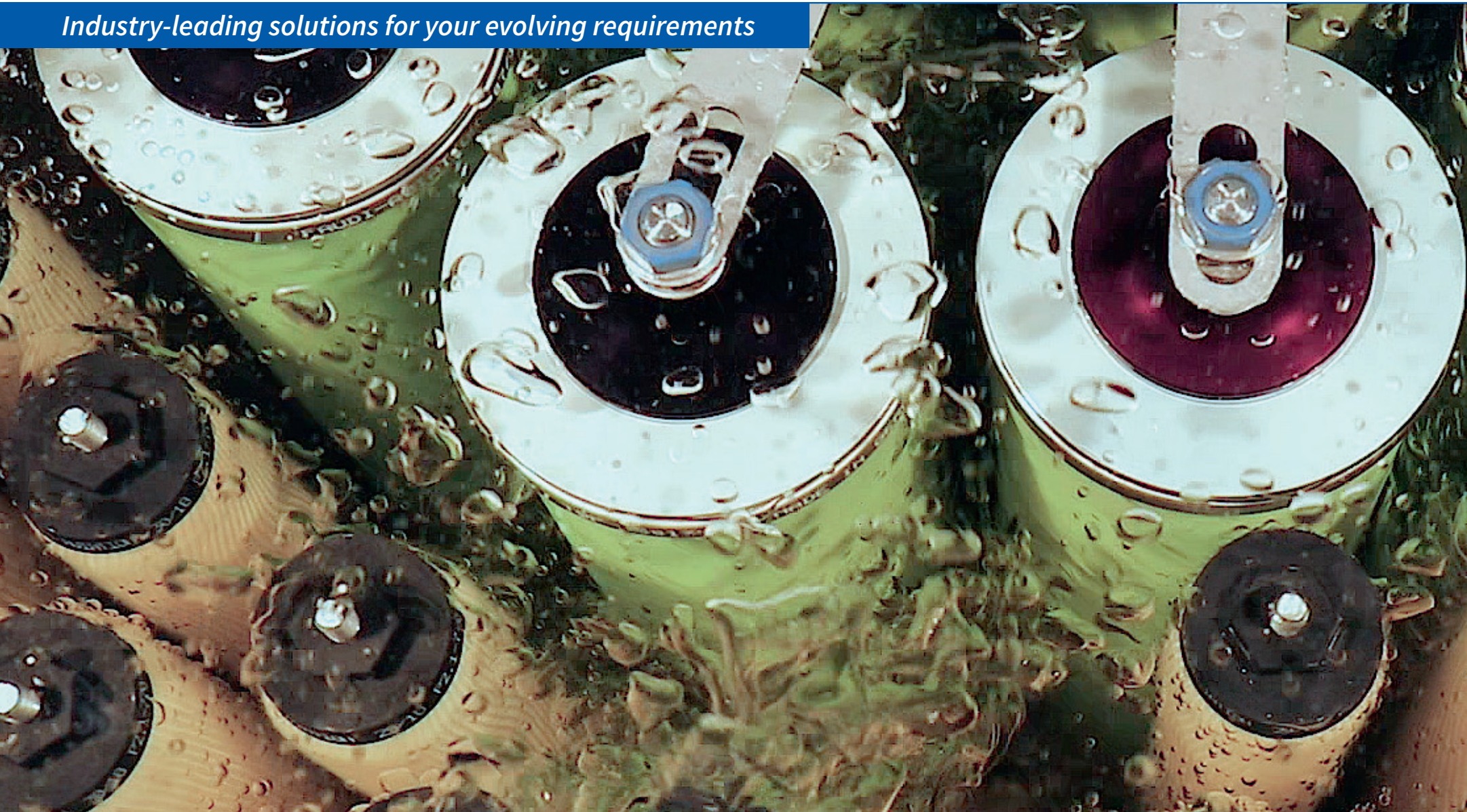




Engineering made in Germany

OUR INNOVATIONS, TOMORROW'S STANDARDS

Industry-leading solutions for your evolving requirements





MANAGING THE CHANGE 2 - 3

- Filter/Water Separator FW24-H-T with Sensor Technology | 2
- Dirt Defence Filter (DDO) with Sensor Technology | 3

FILTER VESSELS 4 - 17

- Filter/Water Separators | 6 - 15
- Microfilters | 16
- Filter Monitors | 17

FILTER ELEMENTS 18 - 26

- Coalescers | 20 - 21
- Microfilters | 24
- End Caps | 26
- Separators | 22 - 23
- Dirt Defence Filters | 25

ACCESSORIES 27

- Automatic Air Eliminator, Pressure Relief Valve, Differential Pressure Gauges, Drain Valve, Sample Probe, Sump Heater | 27

SENSOR TECHNOLOGY 28 - 31

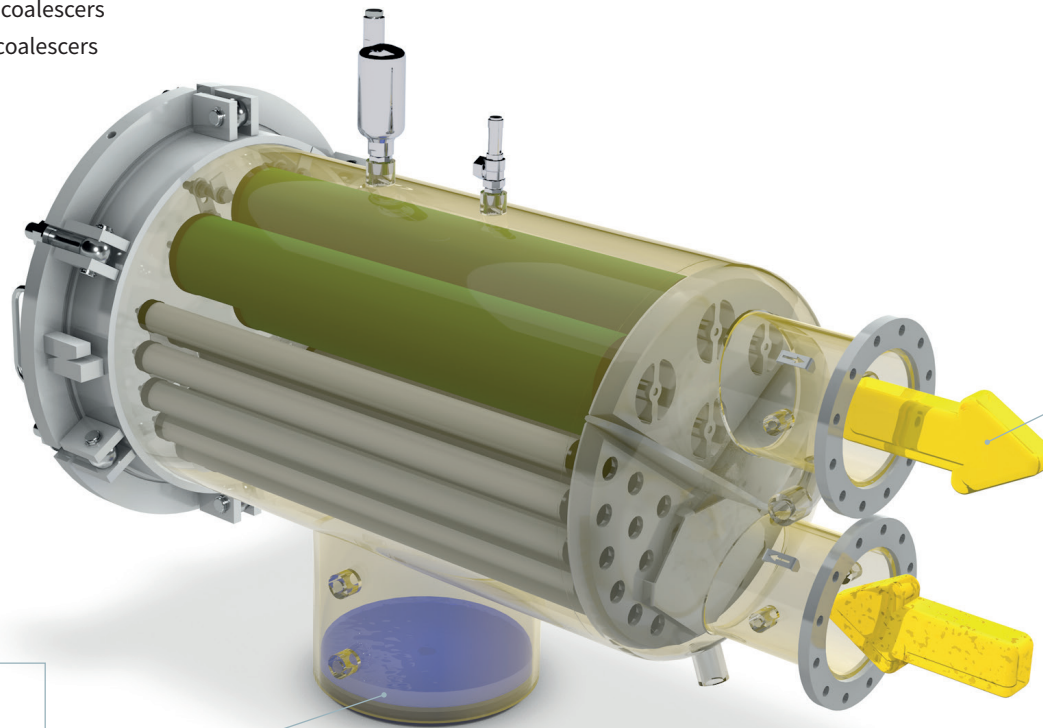
- AFGUARD®, SLUGGUARD®, Contamination Control System gold | 29
- DPGUARD® gold, Contamination Control System silver/ DPGUARD® silver, AFGUARD® looptester, DP-Switch | 30
- DRAINGUARD® Sump, DP Transmitter, Water Treatment System | 31

MANAGING THE CHANGE

Filter/Water Separator FW24-H-T with Sensor Technology

■ FW24-H-T is qualified to EI 1581 6th Edition, Category C, Type S-M

- Maximum flow rate: Up to 4180 lpm (1104 US gpm)
- Smaller than a conventional FWS with 6" coalescers
- Lighter than a conventional FWS with 6" coalescers
- 6 standard models held in inventory for shortened delivery times



SLUGGUARD®

Sensor to distinguish between aviation fuel and water. The SLUGGUARD® is qualified to EI 1592.



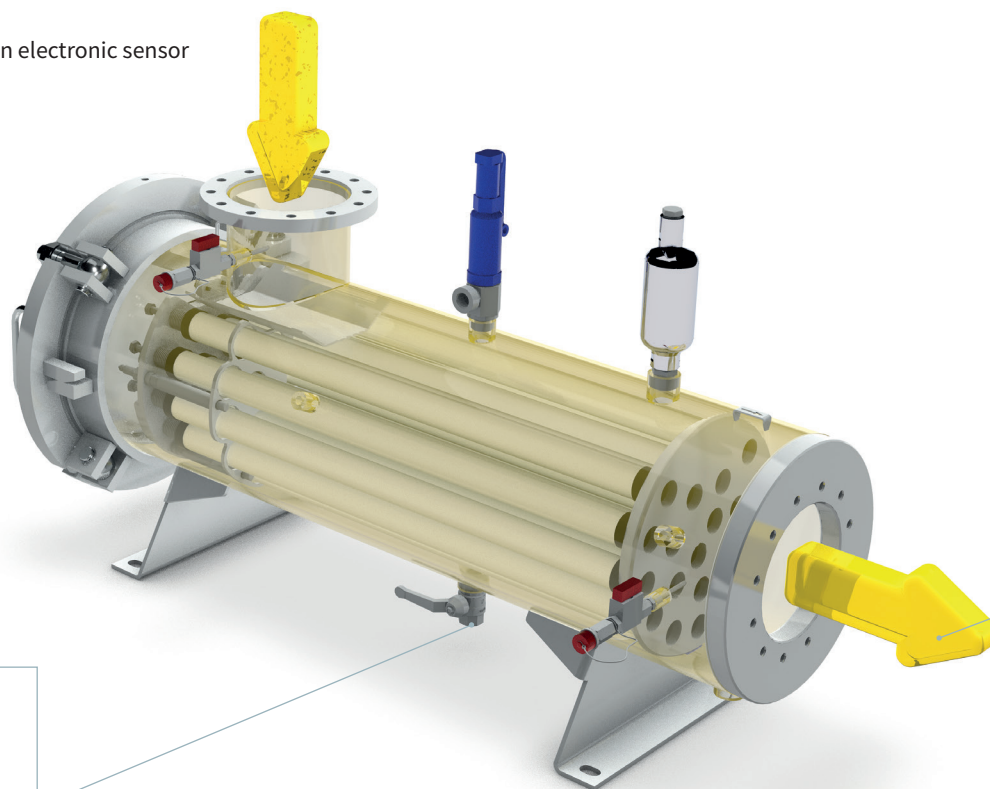
AFGUARD®

Electronic sensor for detection of free water in aviation fuel. The AFGUARD® sensor is qualified to EI 1598 2nd Edition for use as an alternative to Chemical Water Detectors (CWD) by Joint Inspection Group (JIG). The AFGUARD® is regarded as fail safe and fully hazardous-area (ATEX and IECEx) approved. Sensor System conforms to ISO 13849 standard.

In the market for more than 10 years!

Dirt Defence Filter (DDO) with Sensor Technology

- Dirt Defence Filter is qualified to EI 1599 2nd Edition
 - The drop-in solution
 - Easy installation
 - Effective technology in conjunction with an electronic sensor
 - Cost effective



AFGUARD®

Electronic sensor for detection of free water in aviation fuel. The AFGUARD® sensor is qualified to EI 1598 2nd Edition for use as an alternative to Chemical Water Detectors (CWD) by Joint Inspection Group (JIG). The AFGUARD® is regarded as fail safe and fully hazardous-area (ATEX and IECEx) approved. Sensor System conforms to ISO 13849 standard.

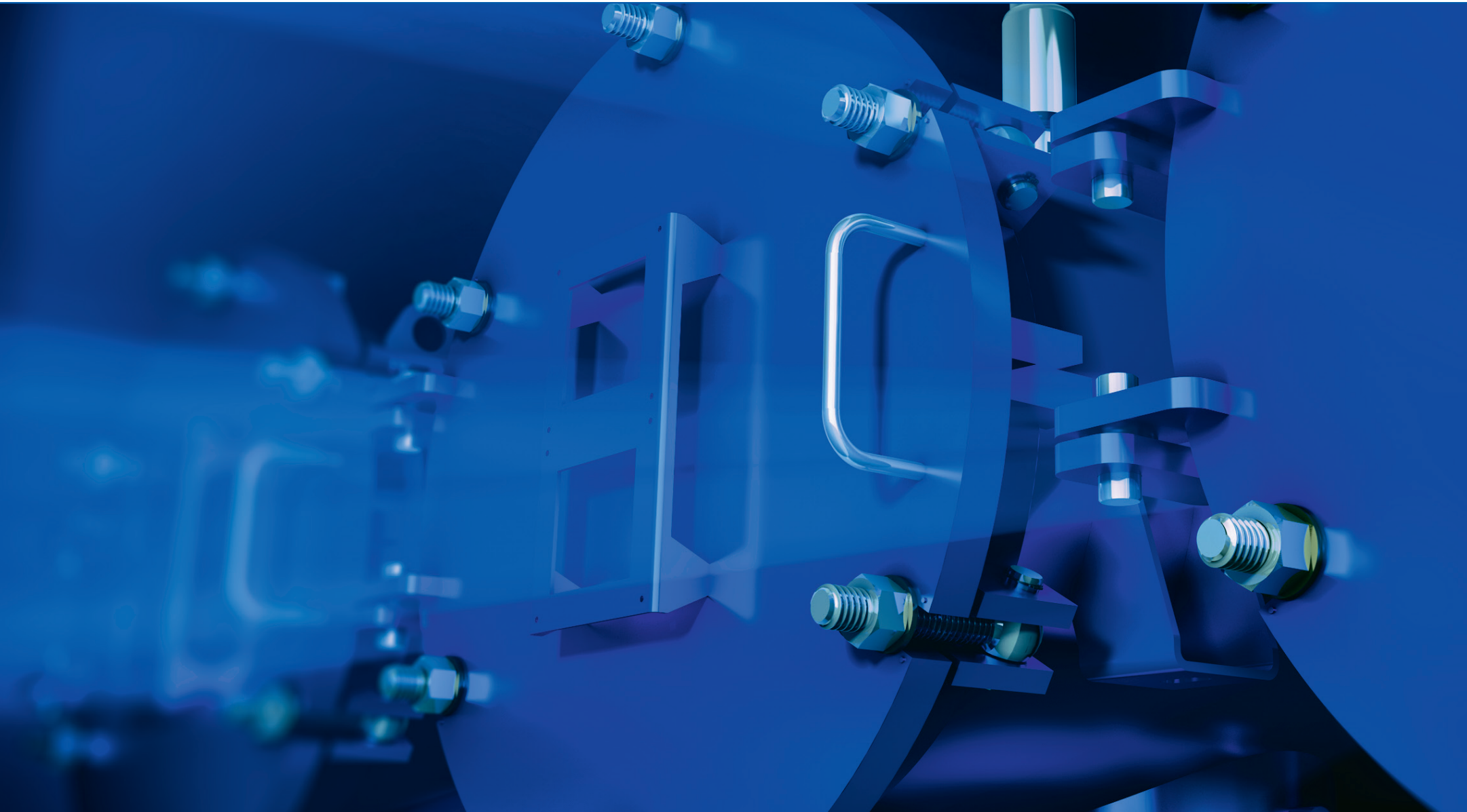
In the market for more than 10 years!



SLUGGUARD®

Sensor to distinguish between aviation fuel and water. The SLUGGUARD® is qualified to EI 1592.

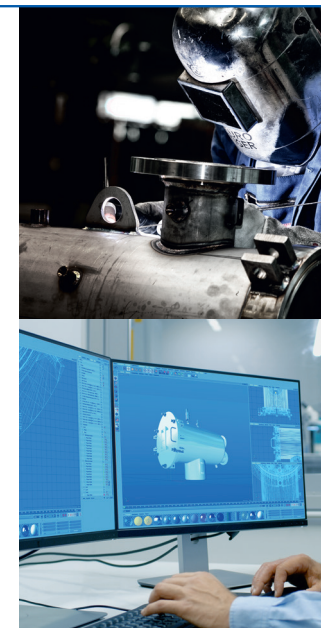
FILTER VESSELS



■ Clean, dry aviation fuel is a basic prerequisite for aviation safety. Only the most highly specified products, manufactured to the highest quality by specialists in the field, provide the necessary assurances.

Typical contaminants that may be present in aviation fuels include free water, particulate, microbiological growth and surfactants. These contaminants can be introduced at any stage in the distribution system and can cause adverse effects on the fuel management and control systems on-board aircraft.

For decades, FAUDI Aviation has been researching innovative filter vessel solutions and pioneering sensor technologies. Our many years of experience and continuous improvement process set global standards for product and service quality. Our product range is perfectly coordinated with aviation fuel quality requirements and will help lower operating costs, reduce system downtimes and help ensure an efficient work process.



Our experience in the development and construction of various filtration systems and elements will help reduce fuel quality issues and maintenance times. We also offer retrofit solutions and supply spare parts for existing installations.

FILTER VESSELS

FILTER/WATER SEPARATORS

■ FAUDI Aviation supplies horizontal and vertical filter/water separators.

Filter/water separators comprise a two-stage system designed to remove free water and particulates from aviation fuels at refineries, terminals, fuel depots, refuellers, hydrant dispensers and other mobile refuelling equipment. Filter/water separators are intended for use in commercial aviation fuel (defined as Category C), military aviation fuel (defined as Category M) and military aviation fuel containing a thermal stability additive (defined as Category M100).

FAUDI Aviation filter/water separators are designed and built in accordance with strict engineering guidelines and pressure vessel regulations.

Qualification procedures: EI 1581 (latest Edition)

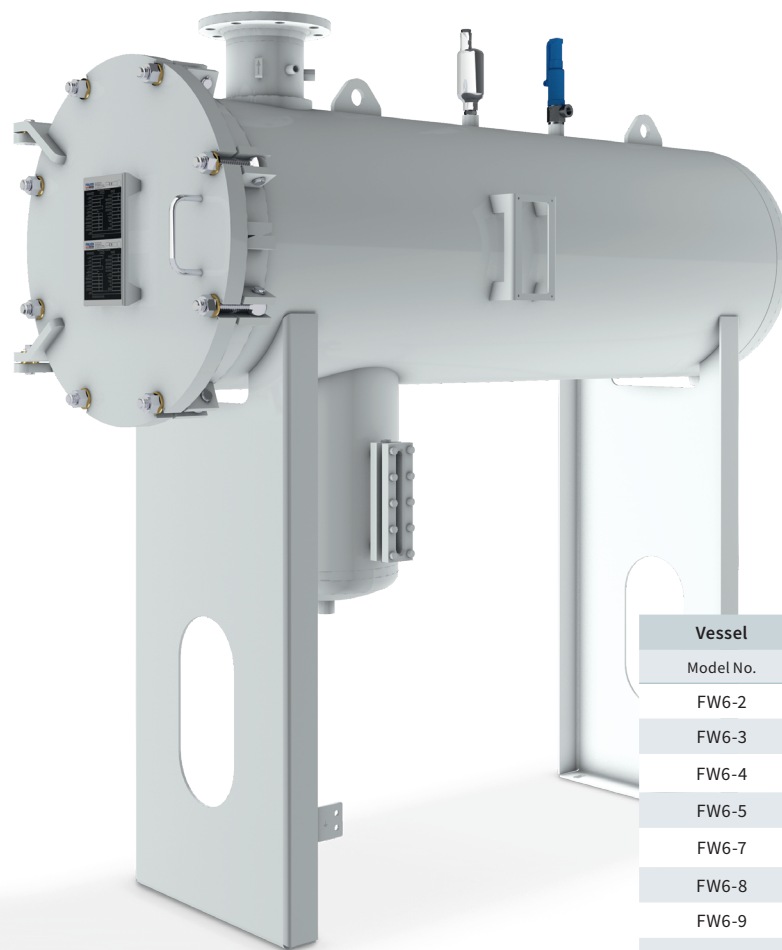
Design and construction: EI 1596 (latest Edition)

ACCESSORIES:

- Automatic air eliminator
- Pressure relief valve
- Differential pressure gauge
- Head lift and swivel device for vertical vessels
- Sump heater

See also *Accessories* on page 27.

FW6 Series



Vessel Model No.	Coalescer Elements		
	Model	Quantity	
FW6-2	P.3-842	2	→
FW6-3	P.3-842	3	→
FW6-4	P.3-842	4	→
FW6-5	P.3-842	5	→
FW6-7	P.3-842	7	→
FW6-8	P.3-842	8	→
FW6-9	P.3-842	9	→
FW6-11	P.3-842	11	→
FW6-13	P.3-842	13	→

FW6-T Series

STANDARD DESIGN

Design code: AD 2000

(other codes available upon request)

Design pressure: Designed to pressure requirements

Material: Carbon steel

(other material available upon request)

Interior: Epoxy coating according to EI 1541

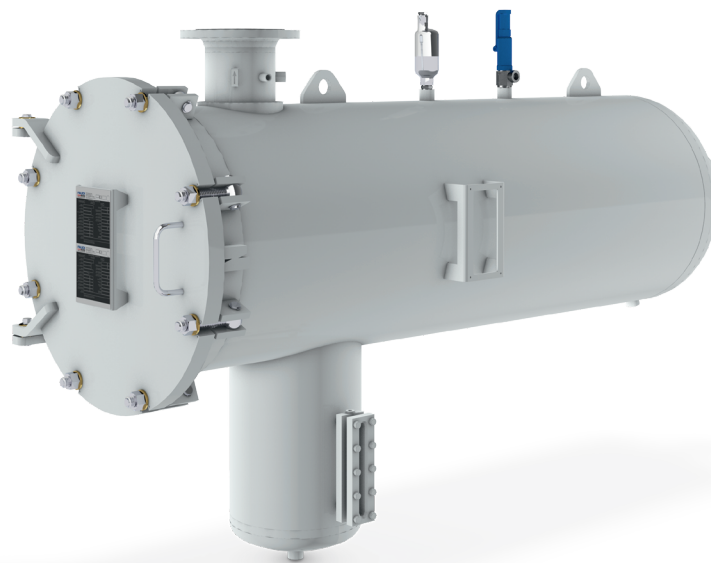
Cover seal: NBR (Buna-N)

TECHNICAL DATA

Flow rate: 720 – 4680 lpm (190 – 1236 US gpm)

APPLICATION AREAS

Civil aviation, Horizontal filter vessels for fixed installation. EI 1581 6th Edition, Category C, Type S.



STANDARD DESIGN

Design code: AD 2000 (other codes available upon request)

Design pressure: Designed to pressure requirements

Material: Carbon steel (other material available upon request)

Interior: Epoxy coating according to EI 1541

Cover seal: NBR (Buna-N)

TECHNICAL DATA

Flow rate Type S: 720 – 3240 lpm (190 – 855 US gpm)

Flow rate Type S-LW: 1000 – 4500 lpm (264 – 1188 US gpm)

APPLICATION AREAS

Civil aviation, Horizontal filter vessels for mobile installation. EI 1581 6th Edition, Category C, Type S and S-LW.

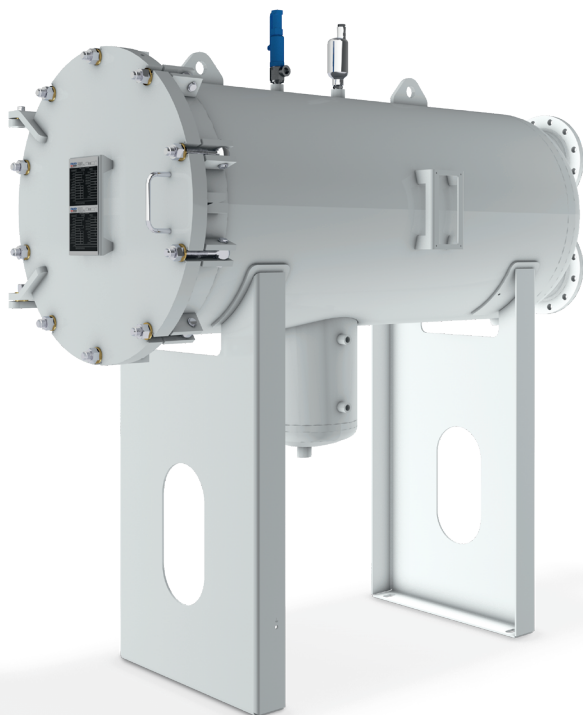
Separator Elements		Flow Rates	
Model	Quantity	lpm	US gpm
300 62 12	1	720	190
300 63 80	1	1080	285
300 62 75	1	1440	380
300 63 36	1	1800	475
300 63 37	1	2520	665
300 62 74	1	2880	760
300 63 38	1	3240	855
300 63 39	1	3960	1046
300 63 40	1	4680	1236

Vessel	Coalescer Elements		Separator Elements		Flow Rates			
					Type S		Type S-LW	
Model No.	Model	Quantity	Model	Quantity	lpm	US gpm	lpm	US gpm
FW6-T-2	P.3-842	2	300 62 12	1	720	190	1000	264
FW6-T-3	P.3-842	3	300 63 80	1	1080	285	1500	396
FW6-T-4	P.3-842	4	300 62 75	1	1440	380	2000	528
FW6-T-5	P.3-842	5	300 63 36	1	1800	475	2500	660
FW6-T-7	P.3-842	7	300 63 37	1	2520	665	3500	924
FW6-T-8	P.3-842	8	300 62 74	1	2880	760	4000	1056
FW6-T-9	P.3-842	9	300 63 38	1	3240	855	4500	1188

FILTER VESSELS

FILTER/WATER SEPARATORS

FW10-H Series



STANDARD DESIGN

Design code: AD 2000 (other codes available upon request)

Design pressure: Designed to pressure requirements

Material: Carbon steel (other material available upon request)

Interior: Epoxy coating according to EI 1541

Cover seal: NBR (Buna-N)

TECHNICAL DATA

Flow rate: 470 – 9500 lpm (124 – 2509 US gpm)

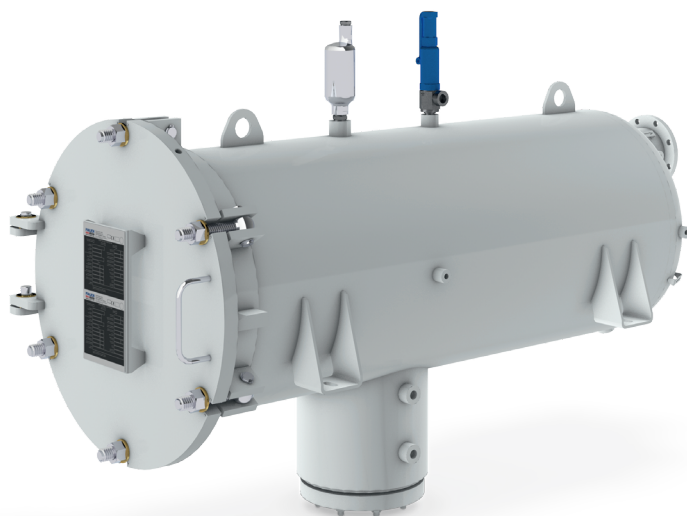
APPLICATION AREAS

Civil aviation, suitable for military applications. Horizontal filter vessels for fixed installation.

EI 1581 6th Edition, Category C and M, Type S.

Vessel Model No.	Coalescer Elements		Separator Elements		Flow Rates	
	Model	Quantity	Model	Quantity	lpm	US gpm
FW10-H-2-559	P.4-559	2	60.644-565	1	470	124
FW10-H-3-559	P.4-559	3	60.644-565	1	705	186
FW10-H-3-842	P.4-842	3	60.644-842	1	1110	293
FW10-H-3-1093	P.4-1093	3	60.644-1093	1	1520	401
FW10-H-4-1093	P.4-1093	4	60.644-842	2	2000	528
FW10-H-5-1422	P.4-1422	5	60.644-1093	2	3200	845
FW10-H-7-1422	P.4-1422	7	60.644-1093	3	4200	1109
FW10-H-8-1422	P.4-1422	8	60.644-1188	3	5200	1373
FW10-H-10-1422	P.4-1422	10	60.644-1188	4	6500	1717
FW10-H-11-1422	P.4-1422	11	60.644-1188	5	7200	1902
FW10-H-12-1422	P.4-1422	12	60.644-1188	5	7850	2073
FW10-H-13-1422	P.4-1422	13	60.644-1188	5	8500	2245
FW10-H-17-1422	P.4-1422	17	60.644-1290	7	9500	2509

FW10-H-T Series



STANDARD DESIGN

Design code: AD 2000 (other codes available upon request)

Design pressure: Designed to pressure requirements

Material: Carbon steel (other material available upon request)

Interior: Epoxy coating according to EI 1541

Cover seal: NBR (Buna-N)

TECHNICAL DATA

Flow rate: 518 – 4950 lpm (136 – 1308 US gpm)

APPLICATION AREAS

Civil aviation, suitable for military applications. Horizontal filter vessels for mobile installation.

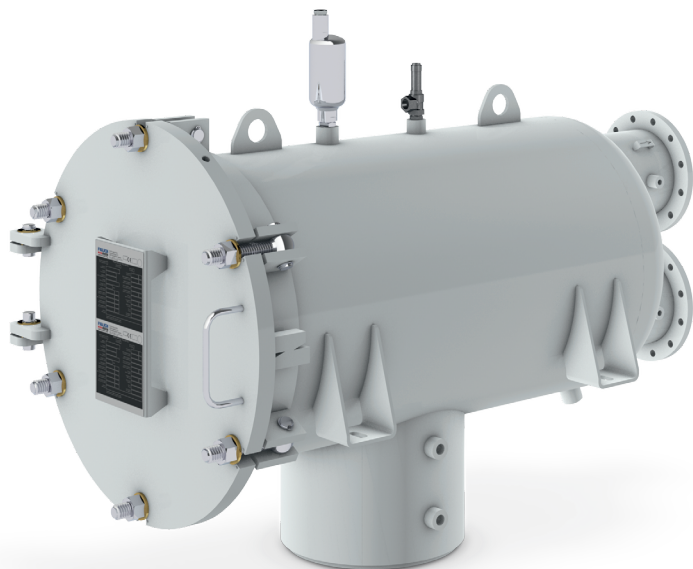
EI 1581 6th Edition, Category C, Type S-LW & Category M, Type S.

Vessel Model No.	Coalescer Elements		Separator Elements		Flow Rates	
	Model	Quantity	Model	Quantity	lpm	US gpm
FW10-H-T-2-559	P.4-559	2	60.444-565	1	518	136
FW10-H-T-3-559	P.4-559	3	60.444-600	1	777	205
FW10-H-T-3-842	P.4-842	3	60.444-842	1	1222	323
FW10-H-T-4-842	P.4-842	4	60.444-600	2	1630	431
FW10-H-T-4-965	P.4-965	4	60.444-756	2	1908	504
FW10-H-T-4-1093	P.4-1093	4	60.444-900	2	2225	588
FW10-H-T-4-1422	P.4-1422	4	60.444-900	2	2812	759
FW10-H-T-7-727	P.7-727	7	60.444-600	2	2372	627
FW10-H-T-7-842	P.7-842	7	60.444-900	2	2852	753
FW10-H-T-7-965	P.7-965	7	60.444-900	2	3340	882
FW10-H-T-7-1093	P.7-1093	7	60.444-1012	2	3895	1029
FW10-H-T-7-1422	P.7-1422	7	60.444-1210	2	4950	1308

FILTER VESSELS

FILTER/WATER SEPARATORS

FW24-H-T Series



STANDARD DESIGN

Design code: AD 2000 (other codes available upon request)

Design pressure: Designed according to EN 12312-05

Material: Stainless steel

Interior: Stainless steel

Cover seal: NBR (Buna-N) or Viton

Mandatory accessory: dp-Switch (Differential pressure control unit)

TECHNICAL DATA

Flow rate: 660 – 4180 lpm (174 – 1104 US gpm)

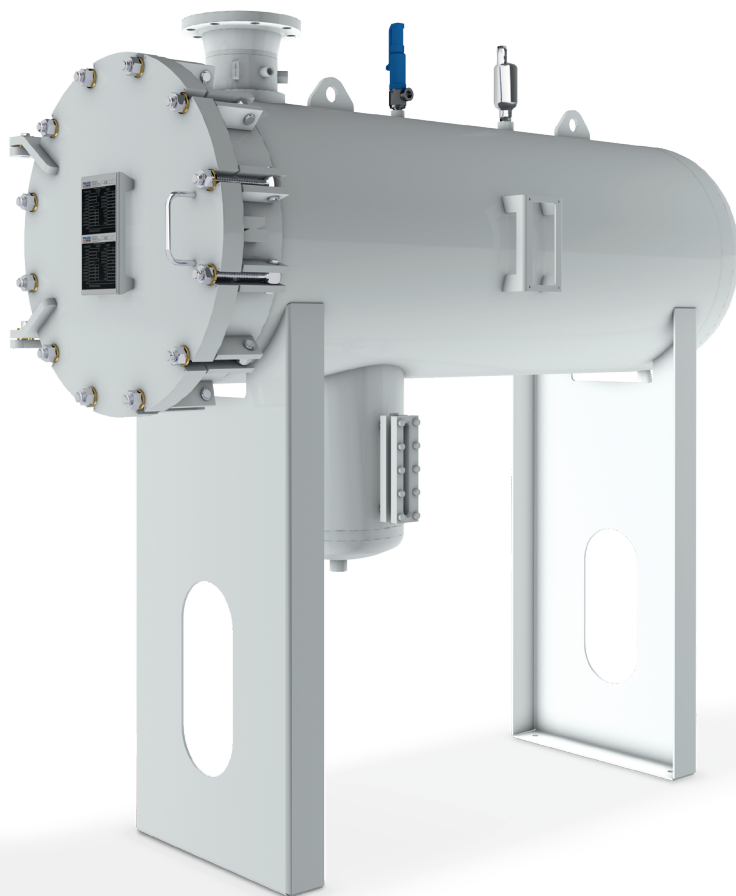
APPLICATION AREAS

Civil aviation, suitable for military applications. Horizontal filter vessels for mobile installation.

EI 1581 6th Edition, Category C and M, Type S-M.

Vessel	Coalescer Elements		Separator Elements		Flow Rates	
	Model No.	Model	Quantity	Model	Quantity	
					lpm	US gpm
FW24-H-T-6-770-10	P2.1-770-6	6	60.4C4-754-DV	1	660	174
FW24-H-T-12-770-10	P2.1-770-6	12	60.4C4-754-DV	2	1320	348
FW24-H-T-19-770-10	P2.1-770-6	19	60.4C4-754-DV	3	2090	552
FW24-H-T-25-770-10	P2.1-770-6	25	60.4C4-754-DV	4	2750	726
FW24-H-T-31-770-10	P2.1-770-6	31	60.4C4-754-DV	5	3410	900
FW24-H-T-38-770-10	P2.1-770-6	38	60.4C4-754-DV	6	4180	1104

FWE Series



STANDARD DESIGN

Design code: AD 2000 (other codes available upon request)

Design pressure: Designed to pressure requirements

Material: Carbon steel (other material available upon request)

Interior: Epoxy coating according to EI 1541

Cover seal: NBR (Buna-N)

TECHNICAL DATA

Flow rate: 750 – 5000 lpm (198 – 1320 US gpm)

APPLICATION AREAS

Military aviation, Horizontal filter vessels for fixed installation.

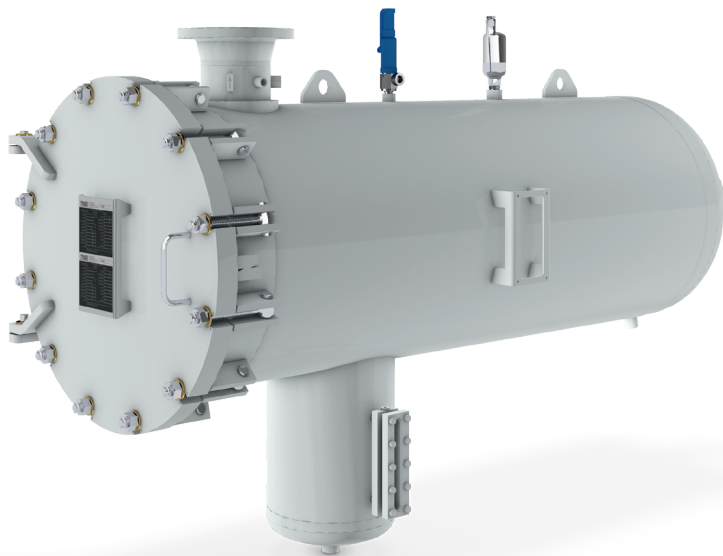
EI 1581 6th Edition, Category M, Type S.

Vessel			Coalescer Elements		Separator Elements		Flow Rates	
Model No.	Model	Quantity	Model	Quantity	lpm	US gpm		
FWE-3	Y.1-842-5	3	On request	1	750	198		
FWE-4	Y.1-842-5	4		1	1000	264		
FWE-5	Y.1-842-5	5		1	1250	330		
FWE-7	Y.1-842-5	7		1	1750	462		
FWE-9	Y.1-842-5	9		1	2250	594		
FWE-11	Y.1-842-5	11		1	2750	726		
FWE-13	Y.1-842-5	13		1	3250	858		
FWE-17	Y.1-842-5	17		1	4250	1122		
FWE-20	Y.1-842-5	20		1	5000	1320		

FILTER VESSELS

FILTER/WATER SEPARATORS

FWE-T Series



STANDARD DESIGN

Design code: AD 2000 (other codes available upon request)

Design pressure: Designed to pressure requirements

Material: Carbon steel (other material available upon request)

Interior: Epoxy coating according to EI 1541

Cover seal: NBR (Buna-N)

TECHNICAL DATA

Flow rate: 750 – 5000 lpm (198 – 1320 US gpm)

APPLICATION AREAS

Military aviation, Horizontal filter vessels for mobile installation.

EI 1581 6th Edition, Category M, Type S.

Vessel		Coalescer Elements		Separator Elements		Flow Rates	
Model No.		Model	Quantity	Model	Quantity	lpm	US gpm
FWE-T-3		Y.1-842-5	3	On request	1	750	198
FWE-T-4		Y.1-842-5	4		1	1000	264
FWE-T-5		Y.1-842-5	5		1	1250	330
FWE-T-7		Y.1-842-5	7		1	1750	462
FWE-T-9		Y.1-842-5	9		1	2250	594
FWE-T-11		Y.1-842-5	11		1	2750	726
FWE-T-13		Y.1-842-5	13		1	3250	858
FWE-T-17		Y.1-842-5	17		1	4250	1122
FWE-T-20		Y.1-842-5	20		1	5000	1320

FW9-S Series



STANDARD DESIGN

Design code: AD 2000 (other codes available upon request)

Design pressure: Designed to pressure requirements

Material: Carbon steel (other material available upon request)

Interior: Epoxy coating according to EI 1541

Cover seal: NBR (Buna-N)

TECHNICAL DATA

Flow rate: 134 – 330 lpm (35 – 87 US gpm)

APPLICATION AREAS

Civil aviation, Vertical filter vessels for fixed and mobile installation.

EI 1581 6th Edition, Category C, Type S.

Vessel	Coalescer Elements		Separator Elements		Flow Rates	
	Model No.	Model	Quantity	Model	Quantity	
						lpm
						US gpm
FW9-S-1-362	P.3-362	1	FW9-S-1(362)	1	134	35
FW9-S-1-467	P.3-467	1	FW9-S-1(467)	1	177	46
FW9-S-1-565	P.3-565	1	FW9-S-1(565)	1	217	57
FW9-S-1-727	P.3-727	1	FW9-S-1(727)	1	283	74
FW9-S-1-842	P.3-842	1	FW9-S-1(842)	1	330	87

FILTER VESSELS

FILTER/WATER SEPARATORS

FW10-V Series



STANDARD DESIGN

Design code: AD 2000 (other codes available upon request)

Design pressure: Designed to pressure requirements

Material: Carbon steel (other material available upon request)

Interior: Epoxy coating according to EI 1541

Cover seal: NBR (Buna-N)

TECHNICAL DATA

Flow rate: 640 – 9500 lpm (169 – 2510 US gpm)

APPLICATION AREAS

Civil aviation, Vertical filter vessels for fixed installation. EI 1581 6th Edition, Category C, Type S.

Vessel Model No.	Coalescer Elements		Separator Elements		Flow Rates	
	Model	Quantity	Model	Quantity	lpm	US gpm
FW10-V-3-559	P.4-559	3	60.677-565	1	640	169
FW10-V-3-727	P.4-727	3	60.677-727	1	840	222
FW10-V-3-842	P.4-842	3	60.677-727	1	960	254
FW10-V-5-727	P.4-727	5	60.677-727	2	1400	370
FW10-V-5-842	P.4-842	5	60.677-727	2	1680	444
FW10-V-9-727	P.4-727	9	60.677-727	3	2500	660
FW10-V-9-965	P.4-965	9	60.677-727	3	3000	792
FW10-V-9-1093	P.4-1093	9	60.677-1093	3	4000	1057
FW10-V-11(12)-965	P.4-965	11(12)	60.677-900	5	4335	1145
FW10-V-9-1422	P.4-1422	9	60.677-1093	3	4500	1189
FW10-V-12-1093	P.4-1093	12	60.677-900	5	5500	1453
FW10-V-11(12)-1422	P.4-1422	11(12)	60.677-1188	5	6500	1717
FW10-V-12-1422	P.4-1422	12	60.677-1188	6	7100	1876
FW10-V-14-1422	P.4-1422	14	60.677-1188	6	8150	2153
FW10-V-15-1422	P.4-1422	15	60.677-1188	6	8750	2312
FW10-V-16-1422	P.4-1422	16	60.677-1188	6	9500	2510

VFH Series



STANDARD DESIGN

Three element options to meet the requirements of the aviation fuel filtration industry:
Coalescer/Separator Element, Microfilter (Pre-filter) and Filter Monitor.

Design pressure: 10 bar (145 psi)

Coating: Powder coated

Material: Die-casting aluminium head, carbon steel filter bowl

Cover seal: NBR (Buna-N)

TECHNICAL DATA

Flow rate: Up to 193 lpm (51 US gpm)

APPLICATION AREAS

For use with Jet fuel, AVGAS, Diesel, MoGas. Vertical filter vessels for FBO operations, fixed and mobile installation.

Micron Rating (µm)	Elements				Flow Rates	
	Coalescer/ Separator acc. to EI 1581	Category	Filter Monitor acc. to EI 1583*	Microfilter acc. to EI 1590	lpm	US gpm
1	CS6-355-1	C, Type S			110	29
1	CS6-355-1	C, Type S-LW			136	35
1	MCS6-355-1	M, Type S			90	23
1			MO6.01C1-355-1-6B		193	51
1				EIMF6.01C1-355-1	177	46
5				EIMF6.01C1-355-5	177	46

* Note: Specification EI 1583 will be withdrawn by no later than 31st December 2020.

FILTER VESSELS

MICROFILTERS

■ Microfilters are used as pre-filters for the efficient and continuous removal of solids such as rust, sand and other particulates from aviation fuels. FAUDI Aviation microfilters are used in refineries, terminals and airport depots, primarily as pre-filters to lengthen the service life of downstream coalescer elements in filter/water separators. FAUDI Aviation microfilters are highly efficient and thus cost effective due to their large filter surfaces area.

Qualification procedures: EI 1590 (latest Edition)

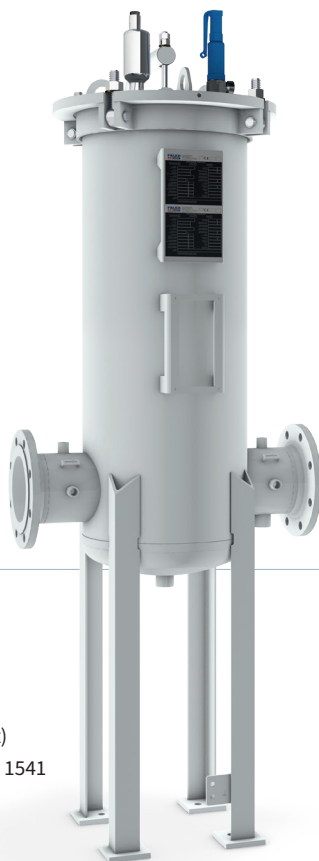
Design and construction: EI 1596 (latest Edition)

ACCESSORIES:

- Automatic air eliminator
- Pressure relief valve
- Differential pressure gauge
- Head lift and swivel device for vertical vessels

See also Accessories on page 27.

MF Series



STANDARD DESIGN

Design code: AD 2000
(other codes available upon request)

Design pressure: Designed to
pressure requirements

Material: Carbon steel
(other material available upon request)

Interior: Epoxy coating according to EI 1541

Cover seal: NBR (Buna-N)

TECHNICAL DATA

Flow rate Type EIMF 4": 230 – 23000 lpm (60 – 6076 US gpm)

Flow rate Type EIMF 6": 2620– 13100 lpm (692 – 3461 US gpm)

APPLICATION AREAS

Civil aviation, Vertical filter vessels for fixed installation. EI 1590 3rd Edition

Vessel	Microfilter Elements		Flow Rates		Nominal Filtration
Model No.	Quantity	ø	lpm	US gpm	Micron Rating (µm)
4" Microfilter Elements					
MF-1	1	4"	230	60	3
MF-3	3	4"	690	182	3
MF-7	7	4"	1610	425	3
MF-10	10	4"	2300	607	3
MF-16	16	4"	3680	972	3
MF-20	20	4"	4600	1215	3
MF-28	28	4"	6440	1701	3
MF-35	35	4"	8050	2126	3
MF-41	41	4"	9430	2491	3
MF-50	50	4"	11500	3038	3
MF-61	61	4"	14030	3706	3
MF-80	80	4"	18400	4861	3
MF-100	100	4"	23000	6076	3
6" Microfilter Elements					
MF-4-1130	4	6"	2620	692	1, 2, 3, 5
MF-6-1130	6	6"	3930	1038	1, 2, 3, 5
MF-7-1130	7	6"	4585	1211	1, 2, 3, 5
MF-8-1130	8	6"	5240	1384	1, 2, 3, 5
MF-9-1130	9	6"	5895	1557	1, 2, 3, 5
MF-11-1130	11	6"	7205	1903	1, 2, 3, 5
MF-12-1130	12	6"	7860	2076	1, 2, 3, 5
MF-13-1130	13	6"	8515	2249	1, 2, 3, 5
MF-15-1130	15	6"	9825	2595	1, 2, 3, 5
MF-20-1130	20	6"	13100	3461	1, 2, 3, 5

FILTER VESSELS

FILTER MONITORS

■ Filter monitors are intended for use in aviation fuels to remove low levels of dirt and absorb low levels of free water on refuellers, hydrant dispensers and other mobile refuelling equipment.

FAUDI Aviation filter monitors are designed and built in accordance with strict engineering guidelines and pressure vessel regulations.

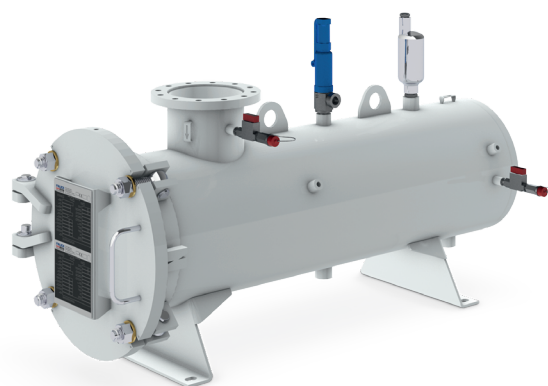
Qualification procedures: EI 1583 (latest Edition)

Design and construction: EI 1596 (latest Edition)

Note: Specification EI 1583 will be withdrawn by no later than 31st December 2020.

FAUDI Aviation's drop-in solution is EI 1599 dirt defence filter in combination with EI 1598 electric water sensor. Flow rate remains the same.

FFM(I) Series



STANDARD DESIGN

Design code: AD 2000
(other codes available upon request)

Design pressure: Designed to pressure requirements

Material: Carbon steel (other material available upon request)

Interior: Epoxy coating according to EI 1541

Cover seal: NBR (Buna-N)

TECHNICAL DATA

Flow rate: 345 – 4600 lpm (91 – 1215 US gpm)

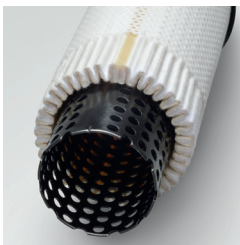
APPLICATION AREAS

Civil aviation, Horizontal filter vessels for mobile installation.
EI 1583 7th Edition

Vessel Model No.	Monitor Elements		Element Length		Flow Rates	
	Model	Quantity	mm	inch	lpm	US gpm
FFM-3	M.2-770-6B	3	770	30	345	91
FFM-5	M.2-770-6B	5	770	30	575	151
FFM-10	M.2-770-6B	10	770	30	1150	303
FFM-12	M.2-770-6B	12	770	30	1380	364
FFM(I)-20	M.2-770-6B	20	770	30	2300	607
FFM(I)-30	M.2-770-6B	30	770	30	3450	911
FFM(I)-36	M.2-770-6B	36	770	30	4140	1093
FFM(I)-40	M.2-770-6B	40	770	30	4600	1215

FILTER ELEMENTS





■ FAUDI Aviation is continuously developing its filter elements to meet the most complex of demands in today's aviation fuel handling industry.

FAUDI Aviation places the greatest value on meticulous production and high quality products. All stages of production, from the purchasing of raw materials to delivery of the end product, are subject to the strictest quality controls according to internal factory standards and ISO 9001.

End user focused analysis ensure economic and effective filter elements.



FILTER ELEMENTS

COALESCERS

■ FAUDI Aviation supplies coalescer elements that are qualified to commercial and military specifications.

Coalescer elements are designed to coalesce free water and to remove fine solids from aviation fuels and other hydrocarbons. Coalescers are deployed at the first stage in a filter/water separator, when fuel enters the vessel. The elements are intended for use in filter/water separators on refuellers, hydrant dispensers, other mobile equipment and stationary refuelling equipment. Coalescer elements are also used in industrial applications, in fuel depots, refineries or barges, where high water removal efficiency plays a crucial role.

Qualification procedures: EI 1581 (latest Edition)

Flow direction: In-to-out

Service time (max.): 36 months ¹⁾

Storage time (max.): 60 months ¹⁾

Nominal filtration: According to EI 1581, latest Edition

Operating temperature range: -30°C to +80°C (-22° to 176°F)

¹⁾ Manufacturer recommendation

P-Type



STANDARD DESIGN

Center tube: Polyamide, reinforced glass fibre/
Epoxy coated steel

Choice of end cap: Flat sealed or threaded base

Outside diameter: 152 mm (6 in)

TECHNICAL DATA

Nominal filtration: According to EI 1581 6th Edition

Change-out differential pressure: 1.0 bar (15 psi)

APPLICATION AREAS

EI 1581 6th Edition, Category C

P2-Type



STANDARD DESIGN

Center tube: Stainless steel

Choice of end cap: Threaded base

Outside diameter: 50 mm (2 in)

TECHNICAL DATA

Nominal filtration: According to EI 1581 6th Edition

Change-out differential pressure: 1.0 bar (15 psi)

APPLICATION AREAS

EI 1581 6th Edition, Category C. The MIL2 type coalescer is suitable for military applications.

MIL-Type



STANDARD DESIGN

Center tube: Polyamide, reinforced glass fibre/
Epoxy coated steel
Choice of end cap: Flat sealed or threaded base
Outside diameter: 152 mm (6 in)

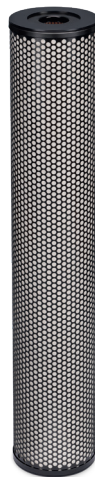
TECHNICAL DATA

Nominal filtration: According to EI 1581 6th Edition
Change-out differential pressure: 1.0 bar (15 psi)

APPLICATION AREAS

EI 1581 6th Edition, Category M

D-Type



STANDARD DESIGN

Center tube: Polyamide, reinforced glass fibre/
Epoxy coated steel
Choice of end cap: Flat sealed or threaded base
Outside diameter: 152 mm (6 in)

TECHNICAL DATA

Nominal filtration: 1 µm
Change-out differential pressure: 1.0 bar (15 psi)

APPLICATION AREAS

TL 4330-0001 (Part 1 & 2), STS-M 126

A-Type



STANDARD DESIGN

Center tube: Polyamide, reinforced glass fibre/
Epoxy coated steel
Choice of end cap: Flat sealed or threaded base
Outside diameter: 152 mm (6 in)

TECHNICAL DATA

Nominal filtration: 10 µm
Change-out differential pressure: 1.0 bar (15 psi)

APPLICATION AREAS

Diesel

FDC-Type



STANDARD DESIGN

Center tube: Polyamide, reinforced glass fibre/
Epoxy coated steel
Choice of end cap: Flat sealed or threaded base
Outside diameter: 152 mm (6 in)

TECHNICAL DATA

Nominal filtration:
5 µm, 10 µm, 15 µm, 20 µm, 25 µm
Change-out differential pressure: 1.0 bar (15 psi)

APPLICATION AREAS

Diesel

FILTER ELEMENTS

SEPARATORS

■ FAUDI Aviation supplies separator elements that are qualified to commercial or military specifications.

Separator elements are used as the second stage of a high-performance separation in filter/water separators. After emergence from the coalescer, aviation fuels pass through the pores of the separator element while water droplets are repelled by the hydrophobic surface. Water droplets settle into the filter/water separator sump to be drained off.

FAUDI Aviation separator elements are available with a Teflon®-coated screen or synthetic mesh. Separator elements with a Teflon®-coated screen can be reused after a cleaning during coalescer element changeouts. Small areas of damage can be repaired. It is recommended that separator elements with a synthetic mesh are replaced during coalescer changeouts.

Qualification procedures: EI 1581 (latest Edition)

Flow direction: Out-to-in

Service time (max.): 120 months ¹⁾ ³⁾ / 36 months ²⁾ ³⁾

Storage time (max.): 60 months ³⁾

Operating temperature range: -30°C to +80°C (-22° to 176°F)

¹⁾ Teflon®-coated mesh

²⁾ Synthetic mesh

³⁾ Manufacturer recommendation

60 Type



STANDARD DESIGN

High performance water removal

Outside diameter: See data sheet

Separator screen: Teflon®-coated stainless steel mesh, reusable after cleaning

APPLICATION AREAS

EI 1581 6th Edition, Category C

FW6/ FW6-T Type



STANDARD DESIGN

High performance water removal

Outside diameter: See data sheet

Separator screen: Teflon®-coated stainless steel mesh, reusable after cleaning

APPLICATION AREAS

EI 1581 6th Edition, Category C

FWE/FWE-T Type



STANDARD DESIGN

High performance water removal

Outside diameter: See data sheet

Separator screen: Teflon®-coated stainless steel mesh

APPLICATION AREAS

EI 1581 6th Edition, Category M

60-MIL Type



STANDARD DESIGN

High performance water removal

Outside diameter: See data sheet

Separator screen: Teflon®-coated stainless steel mesh, reusable after cleaning

APPLICATION AREAS

EI 1581 6th Edition, Category M

FDS Type



STANDARD DESIGN

High performance water removal

Outside diameter: See data sheet

Separator screen: Teflon®-coated stainless steel mesh, reusable after cleaning

APPLICATION AREAS

Diesel

FILTER ELEMENTS

MICROFILTERS

■ Microfilters are used as pre-filters for the efficient and continuous removal of solids such as rust, sand and other particulates from aviation fuels. FAUDI Aviation microfilters are used in refineries, terminals and airport depots, primarily as pre-filters to lengthen the service life of downstream coalescer elements in filter/water separators. FAUDI Aviation microfilters are highly efficient and thus cost effective due to their large filter surfaces area.

Qualification procedures: EI 1590 (latest Edition)

Flow direction: Out-to-in

Service time (max.): 60 months ¹⁾

Storage time (max.): 60 months ¹⁾

Operating temperature range: -30°C to +80°C
(-22° to 176°F)

¹⁾ Manufacturer recommendation

4" Microfilter



STANDARD DESIGN

Center tube: Polyamide, reinforced glass fibre

End caps: Polyamide, reinforced carbon fibre

Outside diameter: 101 mm (4")

TECHNICAL DATA

Nominal filtration: 3 µm

Change-out differential pressure: 1.5 bar (22 psi)

APPLICATION AREAS

EI 1590 3rd Edition

6" Microfilter



STANDARD DESIGN

Center tube: Epoxy coated steel

End caps: Polyamid, reinforced glass fibre/ Epoxy coated steel

Outside diameter: 152 mm (6")

TECHNICAL DATA

Nominal filtration: 1µm, 2 µm, 3 µm, 5 µm

Change-out differential pressure: 1.5 bar (22 psi)

APPLICATION AREAS

EI 1590 3rd Edition

FILTER ELEMENTS

DIRT DEFENCE FILTERS

■ Dirt Defence Filter (DDO) are designed for the efficient and continuous removal of solids such as rust, sand and other particulates from aviation fuels.

FAUDI Aviation DDO-Type filter elements are intended for use in filtration systems on mobile into-plane refueling. They are specially designed for retrofitting in filter monitor vessels. The Dirt Defence Filter shall be used in conjunction with an EI 1598 electronic water sensor, e.g. AFGUARD®.

Qualification procedures: EI 1599 (latest Edition)

Flow direction: Out-to-in

Service time (max.): 60 months ¹⁾

Storage time (max.): 60 months ¹⁾

Operating temperature range: -30°C to +80°C
(-22° to 176°F)

¹⁾ Manufacturer recommendation

2" DDO



STANDARD DESIGN

Center tube: Painted steel

End caps: Polyamide, reinforced carbon fibre

Outside diameter: 50 mm (2")

TECHNICAL DATA

Nominal Filtration: According to 1599 2nd Edition

Change-out differential pressure: 1.5 bar (22 psi)

APPLICATION AREAS

EI 1599 2nd Edition

6" DDO



STANDARD DESIGN

Center tube: Painted steel

End caps: Polyamide, reinforced carbon fibre/ Epoxy coated steel

Outside diameter: 152 mm (6")

TECHNICAL DATA

Nominal Filtration: According to 1599 2nd Edition

Change-out differential pressure: 1.5 bar (22 psi)

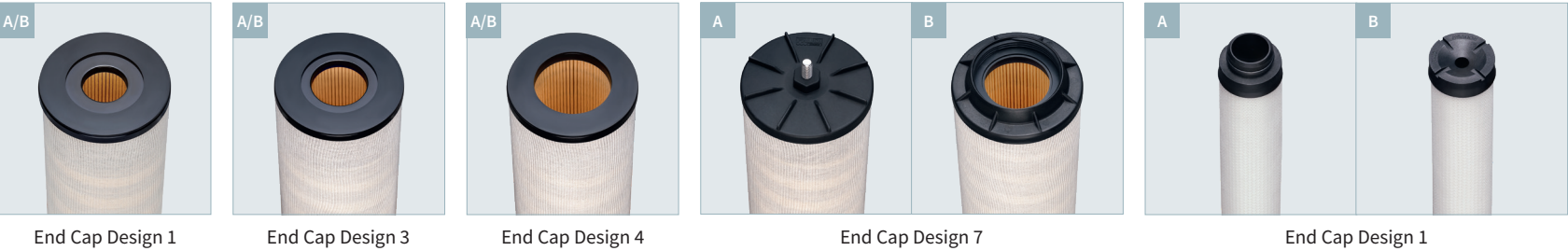
APPLICATION AREAS

EI 1599 2nd Edition

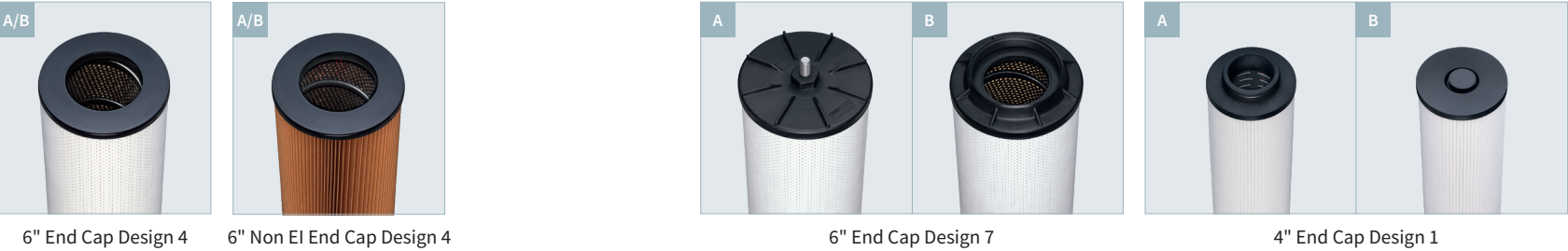
FILTER ELEMENTS

END CAPS

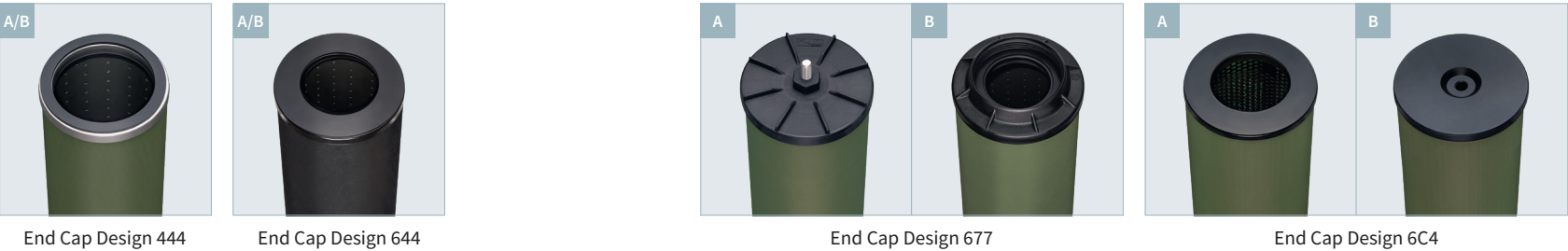
Coalescer Elements



Microfilter Elements



Separator Elements



- A Upper End Cap
- B Lower End Cap
- A/B Upper and Lower End Cap

Automatic Air Eliminator

The automatic air eliminator consists of a fully welded housing and a float ball of stainless steel.

Drain Valve

Manually operated ball valve to sample or to drain the vessel.

Pressure Relief Valve

The pressure relief valve relieves excess pressure due to thermal expansion.

Sample Probe

Permits samples to be taken up and downstream of the filter.

Differential Pressure Gauges

Differential pressure gauges measure the difference between the inlet and outlet pressure, providing an indication of the degree of contaminant loading of the filter elements.

Sump Heater

The heating device prevents freezing of the separated water in the sump.

SENSOR TECHNOLOGY



■ Pioneers in the development of innovative fuel condition monitoring, recording and evaluation technologies. We help our customers to make the handling of aviation fuels and selection of filtration solutions simpler, more economical and ultimately safer.

Our product range comprises state-of-the-art sensor technology for the detection of free water, as well as detection of bulk water. Monitoring and detection of the systems take place in real time. Fuel quality is continuously available, action can be taken in time in case of any deviation.

AFGUARD®

Electronic sensor for the detection of free water in aviation fuels. The AFGUARD® sensor is qualified for use as an alternative to Chemical Water Detectors (CWD).

- Qualified to specification EI 1598 2nd Edition
- Accepted by Joint Inspection Group (JIG)
- Recommended for use downstream of all filtration technologies to verify filter performance
- Recommended by IATA Fuel Quality Pool (IFQP)



TECHNICAL DATA

Measurement range: 0 - 50 ppm
Linear analog output signal: 4 to 20 mA
Operating temperature range: -30°C (-22°F) to +60 °C (140°F)
Maximum operating pressure: 16 bar
Hazardous area approvals: ATEX and IECEx

SLUGGUARD®

Electronic sensor to distinguish between aviation fuel and water. The SLUGGUARD® enables continuous detection of water in sumps of filter/water separators or in drain points of filter vessels. The high-precision switch is also suitable for small filter housings (FBO) in the general aviation area.

A blue LED light indicates operating or alarm switching states.

- Qualified to specification EI 1592 1st Edition

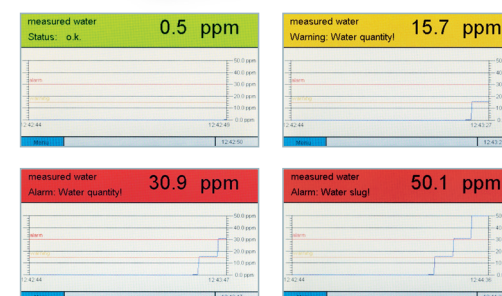


TECHNICAL DATA

Measurement: Radiated signal
Maximum operating pressure: 100 bar
Output signal: max. 20mA
Operating temperature range: -40°C (-40°F) to +85°C (185°F)
Hazardous area approval: ATEX

Contamination Control System gold

Fully automatic touchscreen controller for use in combination with an EI 1598 electronic water sensor, e.g. AFGUARD® to process the actual water content in aviation fuels.



TECHNICAL DATA

Power supply: 24V DC ± 10%
Protection class: IP65
Connections: 8 Digital Input, 4 Digital Output, 4 AI, 3x Relay output
Communication protocol: Modbus TCP
Operating temperature range: -30 °C (-22°F) to +60 °C (140°F)

SENSOR TECHNOLOGY

DPGUARD® gold

System for automatic calculation of corrected differential pressure measurement in refuelling applications.



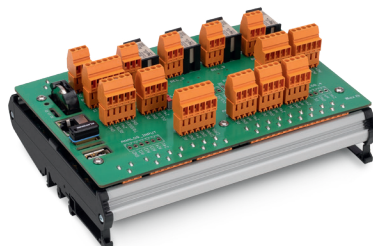
Status: ok	13.12.19	13.00.08
Flow rate	980 l/min	total quantity 0 l
pressure monitoring	measured pressure 0.135 bar	corrected pressure 0.76 bar
free water detection	measured value 112 ppm	setpoint 0.0 ppm

TECHNICAL DATA

Power supply: 24V DC \pm 10%
Protection class: IP65
Connections: 8 Digital Input, 4 Digital Output, 4 AI, 3x Relay output
Communication protocol: Modbus TCP
Operating temperature range:
 -30°C (-22°F) to +60 °C (140°F)

Contamination Control System silver / DPGUARD® silver

See DPGUARD® gold and Contamination Control System gold.



TECHNICAL DATA

Power supply: 24V DC \pm 10%
Protection class: IP65
Connections: 8 Digital Input, 4 Digital Output, 4 AI, 3x Relay output
Communication protocol: Modbus TCP
Operating temperature range:
 -30°C (-22°F) to +60 °C (140°F)

AFGUARD® looptester

Hand held device to test the loop installed behind the AFGUARD®.

According to JIG Bulletin 110, system shall be tested at least every three months in accordance with the manufacturer's instructions.

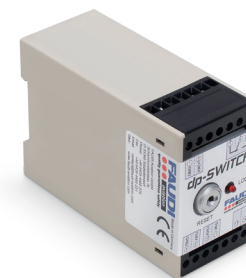


TECHNICAL DATA

Output signal: 4 - 20mA

DP-Switch

DP-Switch automatically stops fuelling processes in case of reaching maximum differential pressure. According to JIG bulletin 58, DP-Switch is as a minimum requirement for equipment to be installed on all hydrant servicers.



TECHNICAL DATA

Power supply: 18 - 30 V DC
Output signal: Max. 10 mA
Operating temperature range:
 -30°C (-22°F) to +60 °C (140°F)
 Adjusted to 1 bar (15 psi)

DRAINGUARD® Sump

A fully automated drainage system for water sumps of filter/water separators. The DRAINGUARD®-Sump contains the SLUGGUARD® sensor to detect and differentiate between water and aviation fuels. In case of water, SLUGGUARD® activates the enclosed electrical drain valve.

- SLUGGUARD® is qualified to specification EI 1592 1st Edition



TECHNICAL DATA

Output signal: Max. 20 mA

Operating temperature range: -40°C (-40°F) to +55°C (131°F)

DP Transmitter

Differential pressure transmitter with metal sensor for the measurement of pressure differences in aviation fuels. The 3-button operation allows easy and reliable start-up. The integrated data module enables easy management of important process and device parameters.



TECHNICAL DATA

Power supply: 10.5 ... 45V DC

Output signal: Max. 20 mA

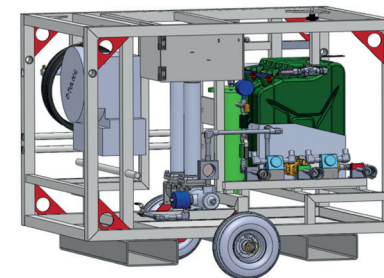
Measuring ranges: 0.25 mbar to 40 bar

Configurable display

Operating temperature range: -40°C (-40°F) to + 85 °C (185°F)

Water Treatment System

The intended use of the BWTS water treatment system is to recover the collected water that is contaminated with solid particles and fuel (oil) before it can be discharged into surface water drains. The BWTS provides the ability to pump the collected water from the contaminated area into a system that separates oil and solid particles from the water.



TECHNICAL DATA

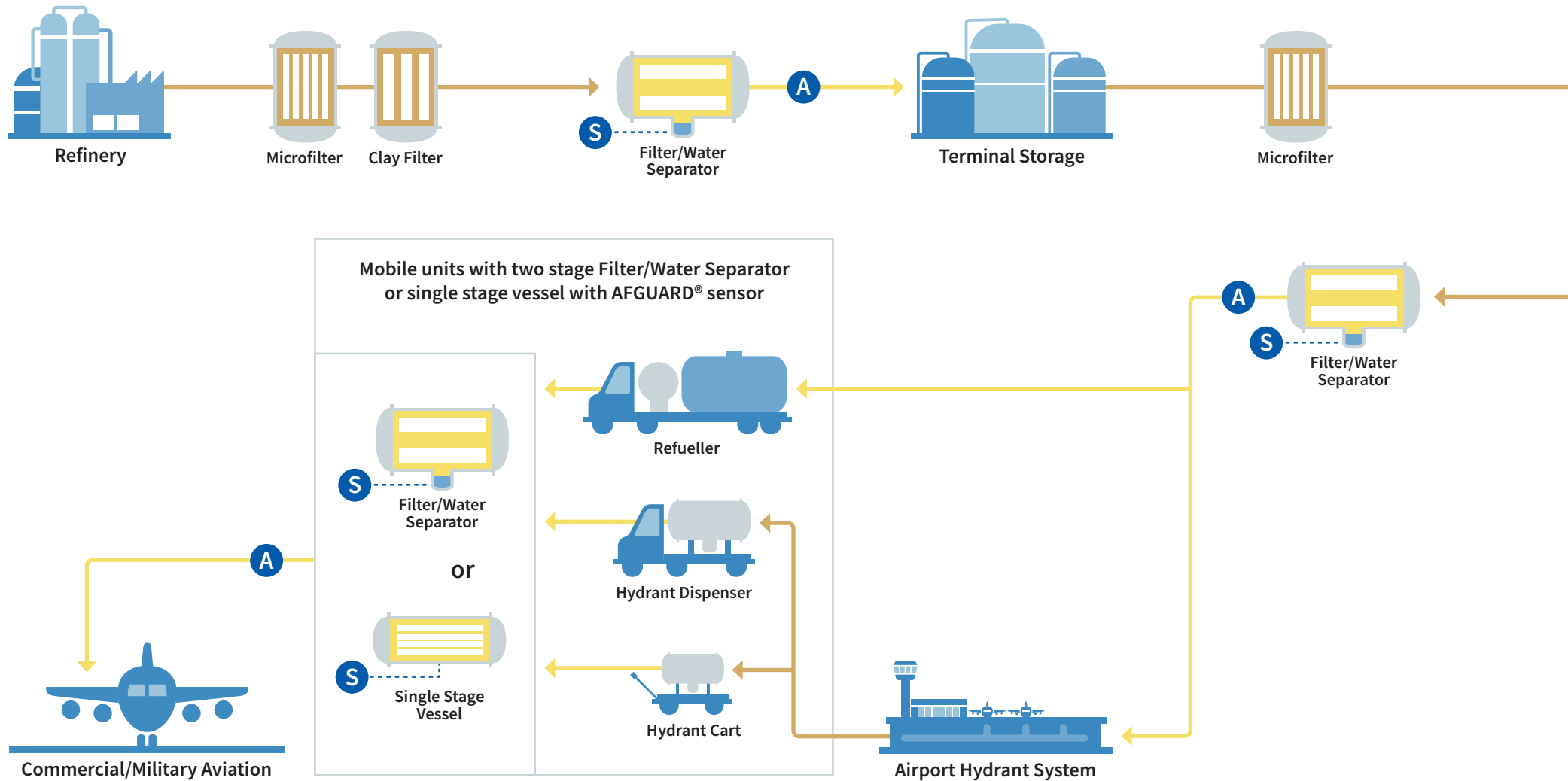
Three stage filtration

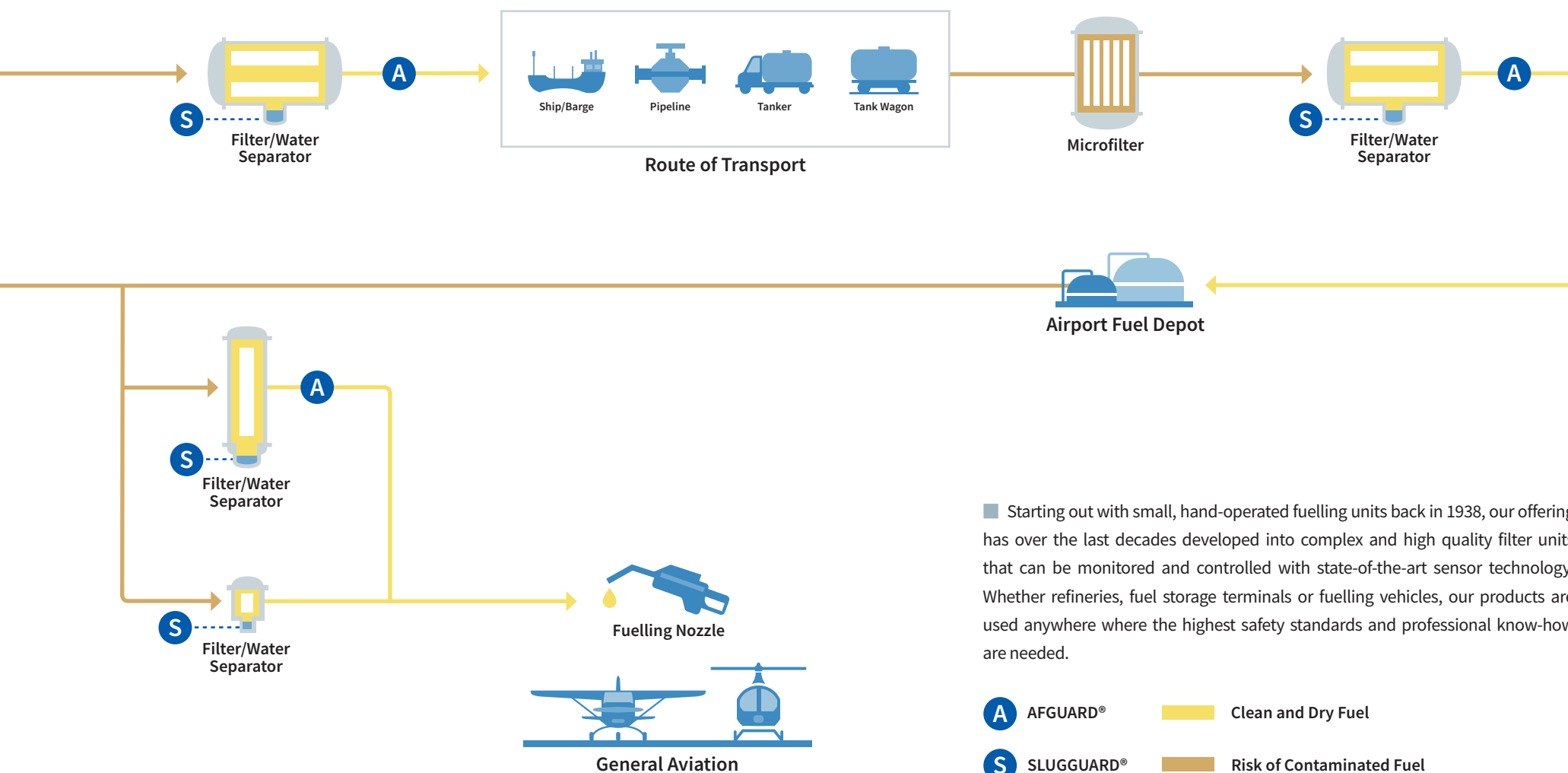
(pre-filter, two stage coalescers)

Residual hydrocarbon level: ≥5 ppm

YOUR AVIATION INDUSTRY PARTNER

Since 1938





Starting out with small, hand-operated fuelling units back in 1938, our offering has over the last decades developed into complex and high quality filter units that can be monitored and controlled with state-of-the-art sensor technology. Whether refineries, fuel storage terminals or fuelling vehicles, our products are used anywhere where the highest safety standards and professional know-how are needed.

