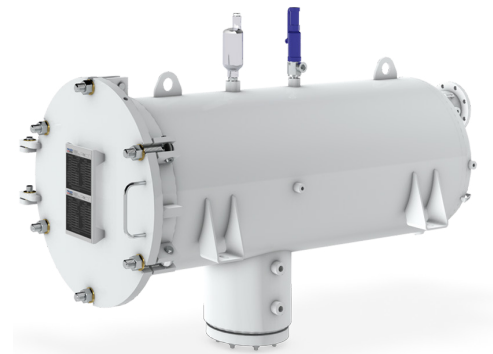


Qualified to specification EI 1581 6th Edition, Category M, Type S

The filter/water separator FW10-HM-T is designed to be compliant with procedural guidelines, applicable legal regulations and requirements of the pressure vessel regulation AD2000. Additional pressure vessel standards can be met with these assemblies as well. The filter vessels incorporate flat sealed or threaded base coalescer elements and reusable separator elements.



Application Area

- Horizontal filter vessels for fixed installation

Technical Data

- | | |
|----------------------------|-----------------------------------|
| • Design and construction: | EI 1596 3rd Edition |
| • Design pressure: | Designed to pressure requirements |
| • Flow rate: | Up to 3150 lpm (832 USgpm) |

Standard Design

- | | |
|---------------|---|
| • Material: | Carbon steel (other version on request) |
| • Interior: | Epoxy coating according to EI 1541 |
| • Exterior: | Prime coated |
| • Cover seal: | NBR (Buna-N) |

Recommended Accessories

- Differential pressure gauge
- Manual drain valve
- Automatic air eliminator
- Pressure relief valve
- Sump heater
- Electronic sensors

Order Reference

Vessels		Coalescer Elements		Separator Elements		Flow Rates	
Model No.	Model	Quantity	Model	Quantity	lpm	USgpm	
FW10-HM-T-2-559	MIL.4-559 or MIL.7-559	2	60.644-565-DM or 60.677-565-DM	1	375	98	
FW10-HM-T-3-559	MIL.4-559 or MIL.7-559	3	60.644-600-DM or 60.677-600-DM	1	555	146	
FW10-HM-T-3-842	MIL.4-842 or MIL.7-842	3	60.644-842-DM or 60.677-842-DM	1	780	206	
FW10-HM-T-4-842	MIL.4-842 or MIL.7-842	4	60.644-600-DM or 60.677-600-DM	2	1110	293	
FW10-HM-T-4-965	MIL.4-965 or MIL.7-965	4	60.644-756-DM or 60.677-756-DM	2	1390	367	
FW10-HM-T-4-1093	MIL.4-1093 or MIL.7-1093	4	60.644-900-DM or 60.677-900-DM	2	1600	422	
FW10-HM-T-4-1422	MIL.4-1422 or MIL.7-1422	4	60.644-900-DM or 60.677-900-DM	2	2100	554	
FW10-HM-T-7-1093	MIL.4-1093 or MIL.7-1093	7	60.644-1012-DM or 60.677-1012-DM	2	2600	686	
FW10-HM-T-7-1422	MIL.4-1422 or MIL.7-1422	7	60.644-1210-DM or 60.677-1210-DM	2	3150	832	

Dimensions

- For exact dimensions please ask for a vessel drawing

