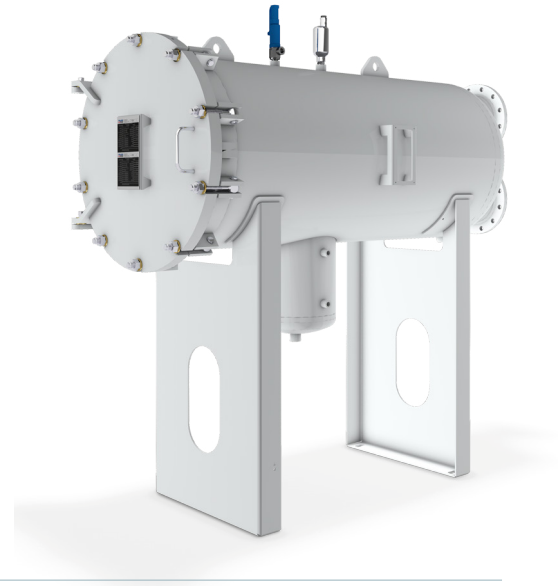


**Qualified to specification EI 1581 6th Edition, Category M, Type S**

The filter/water separator FW10-HM is designed to be compliant with procedural guidelines, applicable legal regulations and requirements of the pressure vessel regulation AD2000. Additional pressure vessel standards can be met with these assemblies as well. The filter vessels incorporate flat sealed or threaded base coalescer elements and reusable separator elements.



**Application Area**

- Horizontal filter vessels for fixed installation

**Technical Data**

- Design and construction: EI 1596 3rd Edition
- Design pressure: Designed to pressure requirements
- Flow rate: Up to 4000 lpm (1056 USgpm)

**Standard Design**

- Material: Carbon steel (other version on request)
- Interior: Epoxy coating according to EI 1541
- Exterior: Prime coated
- Cover seal: NBR (Buna-N)

**Recommended Accessories**

- Differential pressure gauge
- Manual drain valve
- Automatic air eliminator
- Pressure relief valve
- Sump heater
- Electronic sensors

Order Reference

Vessels		Coalescer Elements		Separator Elements		Flow Rates	
Model No.	Model	Quantity	Model	Quantity	lpm	USgpm	
FW10-HM-2-559	MIL.4-559 or MIL.7-559	2	60.644-565-DM or 60.677-565-DM	1	360	95	
FW10-HM-3-559	MIL.4-559 or MIL.7-559	3	60.644-565-DM or 60.677-565-DM	1	560	147	
FW10-HM-3-842	MIL.4-842 or MIL.7-842	3	60.644-842-DM or 60.677-842-DM	1	850	224	
FW10-HM-3-1093	MIL.4-1093 or MIL.7-1093	3	60.644-1093-DM or 60.677-1093-DM	1	1200	317	
FW10-HM-4-1093	MIL.4-1093 or MIL.7-1093	4	60.644-842-DM or 60.677-842-DM	2	1600	422	
FW10-HM-5-1422	MIL.4-1422 or MIL.7-1422	5	60.644-1093-DM or 60.677-1093-DM	2	2500	660	
FW10-HM-7-1422	MIL.4-1422 or MIL.7-1422	7	60.644-1093-DM or 60.677-1093-DM	3	3400	898	
FW10-HM-8-1422	MIL.4-1422 or MIL.7-1422	8	60.644-1188-DM or 60.677-1188-DM	3	4000	1056	

Dimensions

- For exact dimensions please ask for a vessel drawing

