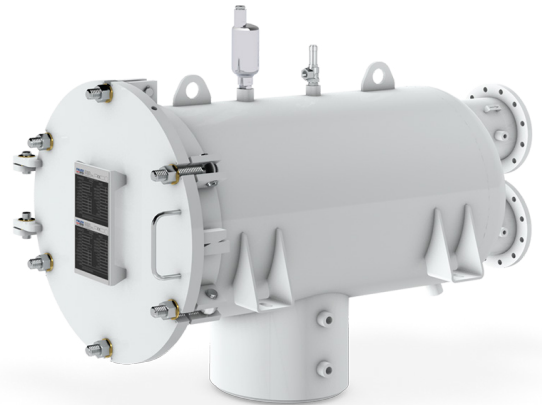


Qualified to specification EI 1581 6th Edition, Category C, Type S-M

The standardized filter/water separator FW24-H-T is designed to be compliant with procedural guidelines, applicable legal regulations and requirements of the pressure vessel regulation AD2000. The filter vessels incorporate threaded base coalescer elements and reusable separator elements.



Application Area

- Designed for hydrant dispensers and refuelers

Technical Data

- | | |
|----------------------------|-----------------------------------|
| • Design and construction: | EI 1596 3rd Edition |
| • Design pressure: | Designed according to EN 12312-05 |
| • Flow rate: | Up to 4180 lpm (1104 USgpm) |

Standard Design

- | | |
|------------------------|-----------------------------|
| • Material: | Stainless steel |
| • Interior: | Stainless steel |
| • Cover seal: | NBR (Buna-N) or FKM (Viton) |
| • Anti-vibration grid: | According to EI 1596 |

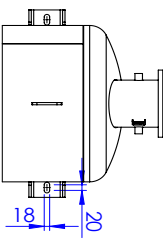
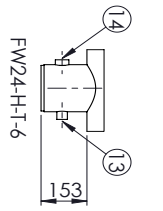
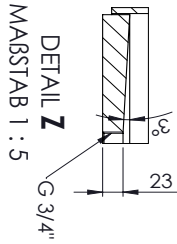
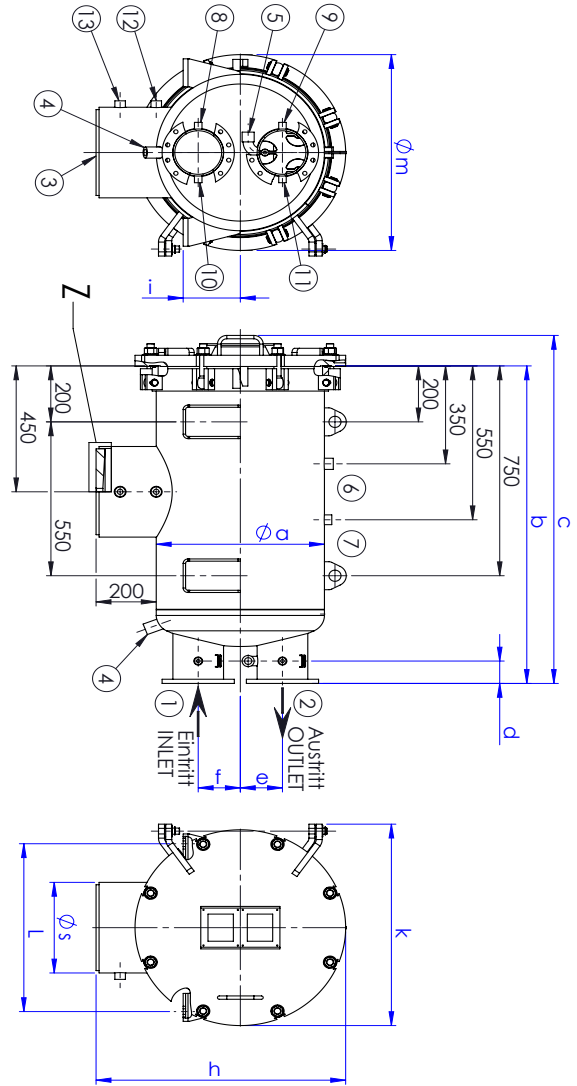
Recommended Accessories

- Differential pressure gauge
- Manual drain valve
- Automatic air eliminator
- Pressure relief valve
- Sampling probe connections
- Electronic sensors

Order Reference

Vessel	Coalescer Elements		Separator Elements		Flow Rates	
Model No.	Model	Quantity	Model	Quantity	lpm	USgpm
FW24-H-T-6-770-10	P2.1-770-6	6	60.4C4-754-DV	1	660	174
FW24-H-T-12-770-10	P2.1-770-6	12	60.4C4-754-DV	2	1320	348
FW24-H-T-19-770-10	P2.1-770-6	19	60.4C4-754-DV	3	2090	552
FW24-H-T-25-770-10	P2.1-770-6	25	60.4C4-754-DV	4	2750	726
FW24-H-T-31-770-10	P2.1-770-6	31	60.4C4-754-DV	5	3410	900
FW24-H-T-38-770-10	P2.1-770-6	38	60.4C4-754-DV	6	4180	1104

FW24-H-T-Baureihe



FW24-H-T-Baureihe - PN10

Modell	Art.Nr.	Separator Model	Coalescer Model	Max. Q [l/min]	Volume [dm³]	Weight [kg]	Inlet / Outlet DIN 28461	Øa [mm]	b [mm]	c [mm]	d [mm]	e [mm]	f [mm]	h [mm]	i [mm]	k [mm]	L [mm]	Øs [mm]	Øm [mm]
FW24-H-T-6-770-10	3014077	60.4C4-75.4-DV	P.2.1-770-6	660	55	71	DN 50 TW	273	1067	1150	75	80	80	498	147	441	300	168.3	410
FW24-H-T-12-770-10	3013622	60.4C4-75.4-DV	P.2.1-770-6	1320	97	150	DN 80 TW	356	1092	1190	75	80	90	628	140	560	400	273	500
FW24-H-T-19-770-10	3013621	60.4C4-75.4-DV	P.2.1-770-6	2090	160	227	DN 100 TW	457	1112	1215	75	110	100	728	160	665	500	323.9	600
FW24-H-T-25-770-10	3013620	60.4C4-75.4-DV	P.2.1-770-6	2750	200	266	DN 150 TW	508	1145	1248	80	125	125	781	170	710	550	323.9	650
FW24-H-T-31-770-10	3013619	60.4C4-75.4-DV	P.2.1-770-6	3410	240	317	DN 150 TW	559	1135	1244	80	140	140	832	190	720	600	323.9	700
FW24-H-T-38-770-10	3013618	60.4C4-75.4-DV	P.2.1-770-6	4180	288	340	DN 150 TW	610	1150	1259	80	165	165	883	190	775	650	323.9	750

Stützenabelle / LIST OF NOZZLES

Stützen NOZZLE NO	Nenngröße NOMINAL SIZE	Flanschtyp TYPE OF FLANGES	Bezeichnung NAME
1	gem. Tabelle ACC. TABLE	gem. Tabelle ACC. TABLE	Eintritt INLET
2	gem. Tabelle ACC. TABLE	gem. Tabelle ACC. TABLE	Austritt OUTLET
3	G 3/4"	Gewinde / THREAD DRAIN	Entleerung DRAIN
4/5 (1)	G 3/4"	Mulle / SOCKET RESIDUAL O-RAN	Reinigungsventil CLEANING VALVE
6	G 3/4"	Mulle / SOCKET AUTO. ÜBERDRUCK	AUTO. ENTLEERUNG AUTO. OVERPRESSION
7	G 1/2"	Mulle / SOCKET	Überdruck PRESSURE RELIEF
8/9	G 1/4"	Mulle / SOCKET	Überdruck DIFF. DRUCK MESSUNG DIFF. PRESSURE GAUGE
10/11	G 1/4"	Mulle / SOCKET	Problemnahme SAMPLE PROBE
12/13 (2)	G 1/2"	Mulle / SOCKET	Wasserstandsanzeiger WATER LEVEL GAUGE
14 (3)	G 1"	Mulle / Socket	Schonglas / SOFT GLASS

- (1) FW24-H-T-6-770-10-G-1/2"
- (2) Nicht bei / NOT WITH FW24-H-T-6-770-10
- (3) Nur bei / ONLY WITH FW24-H-T-6-770-10

- Ausbaldung der Elemente ca. 0,8 Meter
- ELEMENT DISASSEMBLY LENGTH CA. 0,8 METERS
- SICHERHEITSSICHERHEITEN VORBEREITEN!
- SAFETY DEVIATIONS RESERVE!

Technische Daten / TECHNICAL DATA

Berechnung / Herstellung / DESIGN CODE	AD-2000
Max. zul. Betriebsdruck (PS) / MAWP (PS)	10 bar
Prodruck / TEST PRESSURE	15 bar
Prodruck Eintrittskammer / TEST PRESSURE INLET CHAMBER	8 bar
Zul. Betriebstemp. min/max (TS) / TEMPERATURE MIN/MAX (TS)	-40°C / +50°C
Medium / MEDIUM	Jet Fuel
Kategorie / CATEGORY	1
Abnorme / APROVAL	DCRL 2014/68/EU

