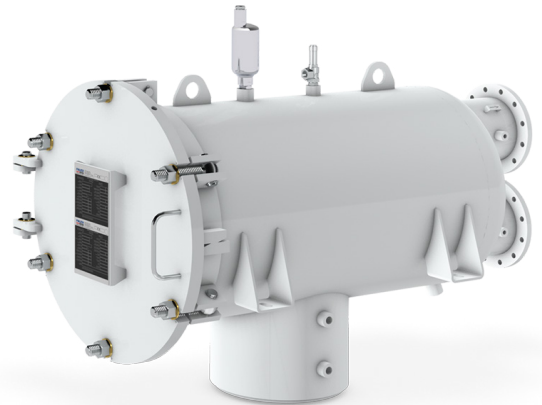


Qualified to specification EI 1581 6th Edition, Category M, Type S-M

The standardized filter/water separator FW24-HM-T is designed to be compliant with procedural guidelines, applicable legal regulations and requirements of the pressure vessel regulation AD2000. The filter vessels incorporate threaded base coalescer elements and reusable separator elements.



Application Area

- Designed for hydrant dispensers and refuelers

Technical Data

- | | |
|----------------------------|-----------------------------------|
| • Design and construction: | EI 1596 3rd Edition |
| • Design pressure: | Designed according to EN 12312-05 |
| • Flow rate: | Up to 3486 lpm (920 USgpm) |

Standard Design

- | | |
|------------------------|-----------------------------|
| • Material: | Stainless steel |
| • Interior: | Stainless steel |
| • Cover seal: | NBR (Buna-N) or FKM (Viton) |
| • Anti-vibration grid: | According to EI 1596 |

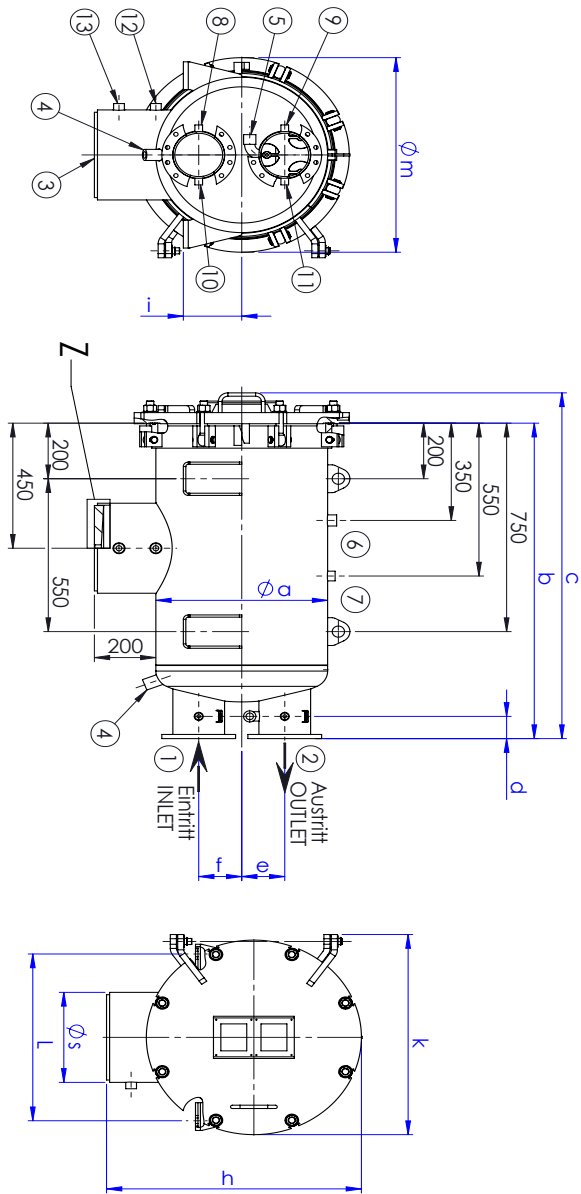
Recommended Accessories

- Differential pressure gauge
- Manual drain valve
- Automatic air eliminator
- Pressure relief valve
- Sampling probe connections
- Electronic sensors

Order Reference

Vessel	Coalescer Elements		Separator Elements		Flow Rates	
Model No.	Model	Quantity	Model	Quantity	lpm	USgpm
FW24-HM-T-6-770-10	MIL2.1-770-6B	6	60.4C4-754-DMV	1	498	131
FW24-HM-T-12-770-10	MIL2.1-770-6B	12	60.4C4-754-DMV	2	996	263
FW24-HM-T-19-770-10	MIL2.1-770-6B	19	60.4C4-754-DMV	3	1577	416
FW24-HM-T-25-770-10	MIL2.1-770-6B	25	60.4C4-754-DMV	4	2075	548
FW24-HM-T-31-770-10	MIL2.1-770-6B	31	60.4C4-754-DMV	5	2573	679
FW24-HM-T-42-770-10	MIL2.1-770-6B	42	60.4C4-754-DMV	6	3486	920

FW24-HM-T-Baureihe



FW24-HM-T-Baureihe - PN10

Modell	Art.Nr.	Separator		Coalescer		Max. Q. [l/min]	Volume [dm ³]	Weight [kg]	Inlet / Outlet DIN 28461	Øa [mm]	b [mm]	c [mm]	d [mm]	e [mm]	f [mm]	h [mm]	i [mm]	k [mm]	L [mm]	Øs [mm]	Øm [mm]
		Model	Qty.	Model	Qty.																
FW24-HM-T-6-770-10	3014324	60-QC4-754-DMV	1	MLL2-1-770-9B	6	498	55	71	DN 50 TW	273	1097	1150	75	80	80	498	147	441	300	188.3	410
FW24-HM-T-1-2-770-10	3014327	60-QC4-754-DMV	2	MLL2-1-770-9B	12	996	97	150	DN 80 TW	356	1092	1190	75	80	90	628	140	500	400	273	500
FW24-HM-T-1-9-770-10	3014288	60-QC4-754-DMV	3	MLL2-1-770-9B	19	1577	160	227	DN100 TW	457	1112	1215	75	110	100	728	160	665	500	323.9	600
FW24-HM-T-25-770-10	3014325	60-QC4-754-DMV	4	MLL2-1-770-9B	25	2075	200	266	DN150 TW	508	1145	1248	80	125	125	781	170	710	550	323.9	650
FW24-HM-T-31-770-10	3014290	60-QC4-754-DMV	5	MLL2-1-770-9B	31	2973	240	317	DN150 TW	559	1135	1244	80	140	140	832	190	720	600	323.9	700
FW24-HM-T-42-770-10	3014331	60-QC4-754-DMV	6	MLL2-1-770-9B	42	3496	288	339	DN150 TW	610	1150	1259	80	165	165	883	190	775	650	323.9	750

Stutzen No.	Nennweite NOZZLE	Nennweite NOMINAL SIZE	Ranscherart TYPE OF FLANGES	Benennung NAME
1	gem. Tabelle ACC. TABLE	gem. Tabelle ACC. TABLE	gem. Tabelle ACC. TABLE	Eintritt INLET
2	gem. Tabelle ACC. TABLE	gem. Tabelle ACC. TABLE	gem. Tabelle ACC. TABLE	Austritt OUTLET
3	G 3/4"	G 3/4"	Gewinde / THREAD	Entleerung DRAIN
4/5 (1)	G 3/4"	G 3/4"	Mulle / SOCKET	Restentleerung RESIDUAL DRAIN
6	G 3/4"	G 3/4"	Mulle / SOCKET	AUTO DRAIN
7	G 1/2"	G 1/2"	Mulle / SOCKET	Überdruck PRESSURE RELIEF
8/9	G 1/4"	G 1/4"	Mulle / SOCKET	Diff. Druck Messung DIFF. PRESSURE GAUGE
10/11	G 1/4"	G 1/4"	Mulle / SOCKET	Probennahme SAMPL. PROBE
12/13 (2)	G 1/2"	G 1/2"	Mulle / SOCKET	Wasserstandsangebe WATER LEVEL GAUGE
14 (3)	G 1"	G 1"	Mulle / SOCKET	Schöniglas / SIGHT GLASS

- (1) FW24-HM-T-6-770-10; G 1/2"
- (2) Nicht bei / NOT WITH FW24-HM-T-6-770-10
- (3) Nur bei / ONLY WITH FW24-HM-T-6-770-10

- Ausbauten der Elemente ca. 0,8 Meter!
- Gewicht des Behälters (ohne Inhalt) ca. 0,8 Meter!
- Gewicht des Behälters (mit Inhalt) ca. 0,8 Meter!
- SICHERHEITSSCHWELLEN VORBEHALTEN!

Technische Daten / TECHNICAL DATA

Berechnung / Herstellung / DESIGN CODE	AD-2000
Max. zul. Betriebsdruck (PS) (MAWP) (PS)	10 bar
Prodruck / TEST PRESSURE	15 bar
Prodruck / TEST PRESSURE INLET CHAMBER	8 bar
Zul. Betriebstemp. min/max (TS) / TEMPERATURE MIN/MAX (TS)	-40°C / +50°C
Medium / MEDIUM	Jet Fuel
Kategorie / CATEGORY	I
Abnahme / APPROVAL	DGR. 2014/68/EU