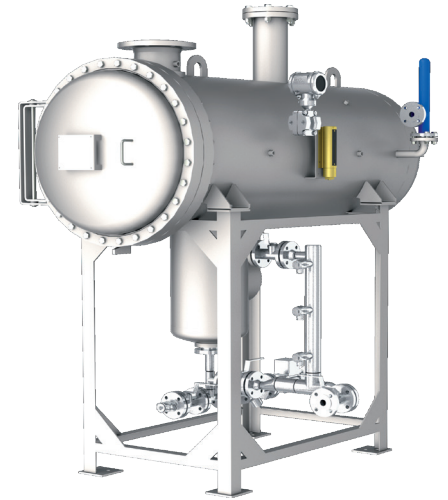


Designed according to specification STS-M 126 und TL 4330-0001

The filter/water separator FWE-STS-M is designed to be compliant with procedural guidelines, applicable legal regulations and requirements of the pressure vessel regulation AD2000. The filter vessels incorporate flat sealed coalescer elements and reusable separator elements.



Application Area

- Horizontal filter vessels for fixed installation

Technical Data

- | | |
|----------------------------|-----------------------------------|
| • Design and construction: | Pressure vessel regulations |
| • Design pressure: | Designed to pressure requirements |
| • Flow rate: | Up to 4000 lpm (1056 USgpm) |

Standard Design

- | | |
|---------------|---|
| • Material: | Carbon steel (other version on request) |
| • Interior: | Epoxy coating |
| • Exterior: | Prime coated |
| • Cover seal: | NBR (Buna-N) |

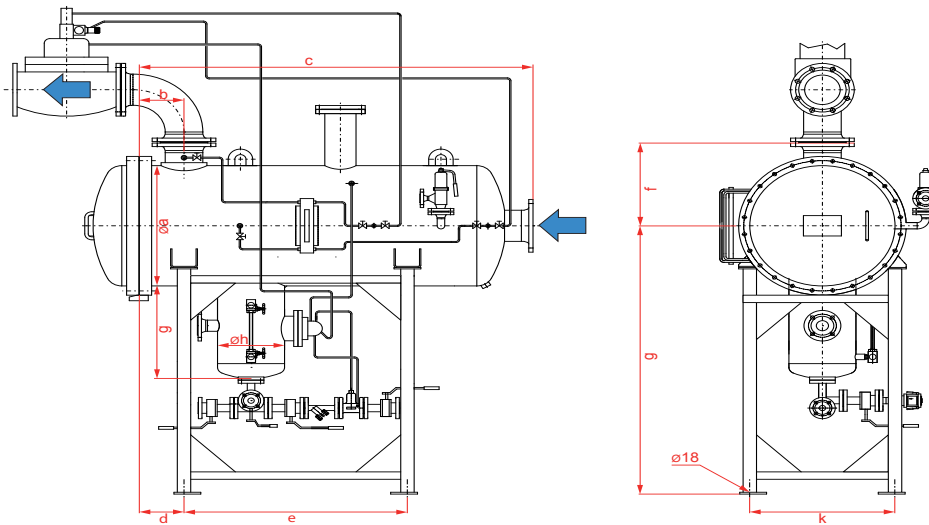
Recommended Accessories

- Differential pressure gauge
- Manual drain valve
- Automatic air eliminator
- Pressure relief valve
- Sump heater
- Electronic sensors

Order Reference

Vessel		Coalescer Elements		Separator Elements		Flow Rates	
Model No.	Model	Quantity	Model	Quantity	lpm	USgpm	
FWE-3	D.1-842	3	On request	1	600	158	
FWE-4	D.1-842	4		1	800	211	
FWE-5	D.1-842	5		1	1000	264	
FWE-7	D.1-842	7		1	1400	369	
FWE-9	D.1-842	9		1	1800	475	
FWE-11	D.1-842	11		1	2200	581	
FWE-13	D.1-842	13		1	2600	686	
FWE-17	D.1-842	17		1	3400	898	
FWE-20	D.1-842	20		1	4000	1056	

Dimensions



Model No.	Connections		Dimensions in mm									
	DIN	ANSI	Ø a	b	c	d	e	f	g	Øh	k	l
FWE-3	DN 80	3"	400	225	1.775	250	1.080	355	475	324	250	1.230
FWE-4	DN 100	4"	450	225	1.797	250	1.080	385	475	324	300	1.230
FWE-5	DN 100	4"	500	225	1.815	250	1.090	420	475	324	350	1.230
FWE-7	DN 100	5"	550	247	1.880	250	1.125	440	475	324	400	1.230
FWE-9	DN 150	5"	650	305	1.995	250	1.230	490	475	324	500	1.295
FWE-11	DN 150	6"	700	300	2.015	250	1.240	530	475	324	550	1.445
FWE-13	DN 150	6"	750	300	2.035	250	1.230	555	475	324	600	1.470
FWE-17	DN 200	8"	850	300	2.055	250	1.230	595	475	324	700	1.495
FWE-20	DN 200	8"	900	375	2.210	250	1.380	620	475	324	750	1.520

Dimensions are for estimating purposes only