

Qualified to specification EI 1581 3rd Edition, Gruppe II, Class A, B & C and MIL-F-8901E

Coalescer elements are designed to coalesce free water and to remove fine solids from aviation fuels. Coalescers are deployed at the first stage in a filter/water separator, when fuel enters the vessel.

FAUDI Aviation K-Type coalescer elements are intended for use in filter/water separators on refuellers, hydrant dispensers and other mobile refuelling equipment. They are characterized by an excellent dirt holding capacity and high water removal efficiency.



Application Areas

- Mobile and stationary refuelling equipment
- Tank farms
- Ships and loading terminals
- Refineries

Technical Data

- | | |
|---|--|
| • Nominal filtration: | According to EI 1581 3rd Edition |
| • Flow direction: | In-to-out |
| • Change-out differential pressure: | 1.0 bar (15 psi) |
| • Maximum pressure differential rating: | 5.2 bar (75 psi) |
| • Service time (max.): | 36 months ¹⁾ |
| • Storage time (max.): | 60 months ^{1) 2)} |
| • Operating temperature: | Min. -30°C (-22°F) / Max. 80°C (176°F) |

1) Manufacturer recommendation

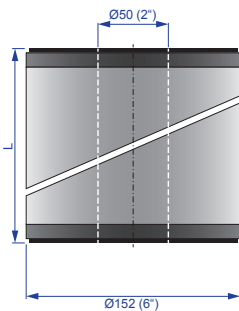
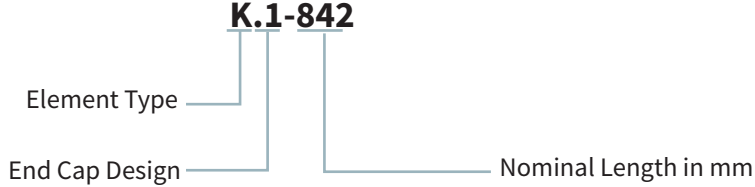
2) Manufacturer recommendation: 20°C and max. 50% humidity after date of shipment out of stock of FAUDI Aviation GmbH

Standard Design

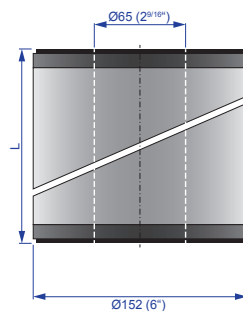
- | | |
|-------------------------|--|
| • Outside diameter: | 152 mm (6 inch) |
| • Center tube: | Epoxy coated steel |
| • Gaskets: | NBR (Buna-N) |
| • End caps: | Polyamide, glass fiber reinforced / Epoxy coated steel |
| • Labeling on end caps: | According to EI specification |

Element Code

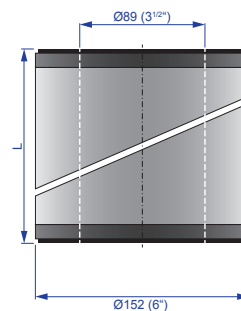
K.1-842



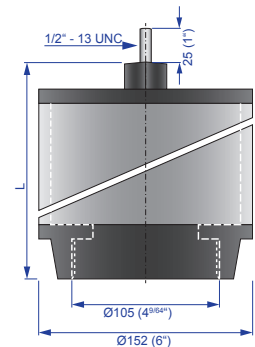
End Cap Design 1



End Cap Design 3



End Cap Design 4



End Cap Design 7

Element Selection

Flat Sealed (Open End)					Screw/Threaded Base		
Nominal Length L		End Cap Design			Nominal Length L		End Cap Design
mm	inch	1	3	4	mm	inch	7
362	14	K.1-362	K.3-362	K.4-362	351	14	K.7-362
467	18	K.1-467	K.3-467	K.4-467			K.7-467
559	22		K.3-559	K.4-559	555	22	K.7-559
727	29	K.1-727	K.3-727	K.4-727	705	28	K.7-727
842	33	K.1-842	K.3-842	K.4-842	834	33	K.7-842
965	38		K.3-965	K.4-965	965	38	K.7-965
1093	43		K.3-1093	K.4-1093	1114	44	K.7-1093
1422	56		K.3-1422	K.4-1422	1418	56	K.7-1422